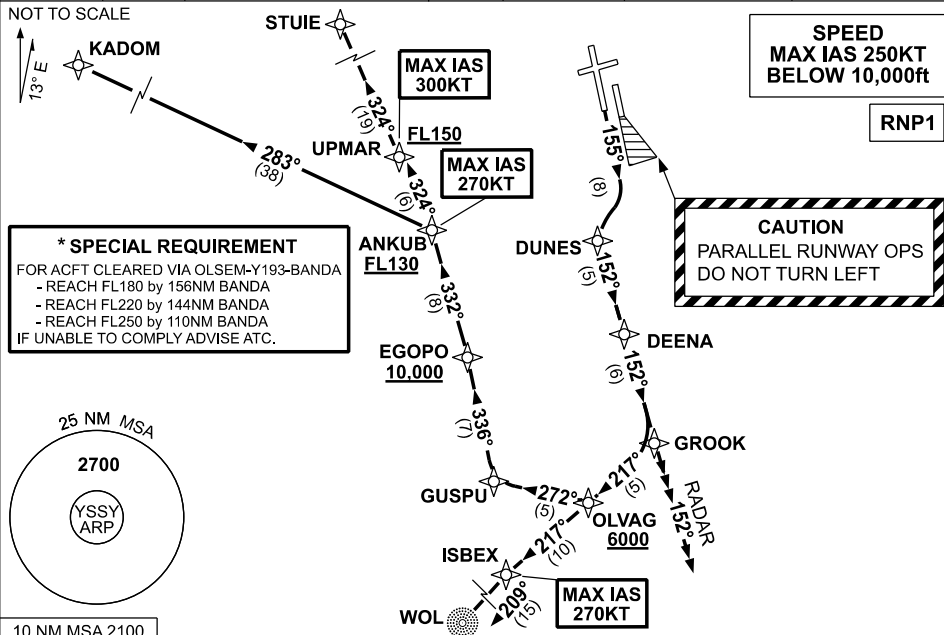


**STANDARD INSTRUMENT DEPARTURES (SID)  
RWY 16R GROOK TWO (RNAV)  
SYDNEY/KINGSFORD SMITH, NSW (YSSY)**

09 JUL 2026

ATIS 118.55	ACD 133.8	SMC E OF RWY 16R/34L 121.7 W OF RWY 16R/34L 126.5	TWR 120.5	DEP(N) N&E 123.0	DEP(S) S,W&NW 129.7	APP(CURFEW HR) 128.3
----------------	--------------	---	--------------	---------------------	------------------------	-------------------------



**DEPARTURE: GROOK TWO**  
CAUTION: Parallel runway operations - DO NOT TURN LEFT

- GRAD 3.3%
- Track 155°
- As soon as practicable turn RIGHT, track DCT to DUNES
- Turn LEFT track 152° to DEENA
- Track 152° to GROOK

**RWY 16R**

**TRANSITIONS:**

- RADAR**
- From GROOK continue tracking 152°
  - Expect radar vectors to cleared route
  - For ACFT cleared via OLSEM
  - \* See SPECIAL REQUIREMENT above

- KADOM**
- MAX IAS 270KT until ANKUB
  - From GROOK turn RIGHT track 217° to OLVAG
  - Cross OLVAG AT or ABV 6000ft
  - Turn RIGHT track 272° to GUSPU
  - Turn RIGHT track 336° to EGOPO
  - Cross EGOPO AT or ABV 10,000ft
  - Turn LEFT track 332° to ANKUB
  - Cross ANKUB AT or ABV FL130 (RQ GRAD TO ANKUB: 5.4%)
  - Turn LEFT track 283° to KADOM then as cleared.

- STUIE**
- MAX IAS 270KT until ANKUB
  - From GROOK turn RIGHT track 217° to OLVAG
  - Cross OLVAG AT or ABV 6000ft
  - Turn RIGHT track 272° to GUSPU
  - Turn RIGHT track 336° to EGOPO
  - Cross EGOPO AT or ABV 10,000ft
  - Turn LEFT track 332° to ANKUB
  - Cross ANKUB AT or ABV FL130 (RQ GRAD TO ANKUB: 5.4%)
  - MAX IAS 300KT until UPMAR
  - Turn LEFT track 324° to UPMAR
  - Cross UPMAR AT or ABV FL150
  - Track 324° to STUIE, then as cleared.

- WOLLONGONG (WOL)**
- MAX IAS 270KT until ISBEX
  - From GROOK turn RIGHT track 217° to OLVAG
  - Cross OLVAG AT or ABV 6000ft
  - Track 217° to ISBEX
  - Turn LEFT track 209° to WOL NDB, then as cleared.