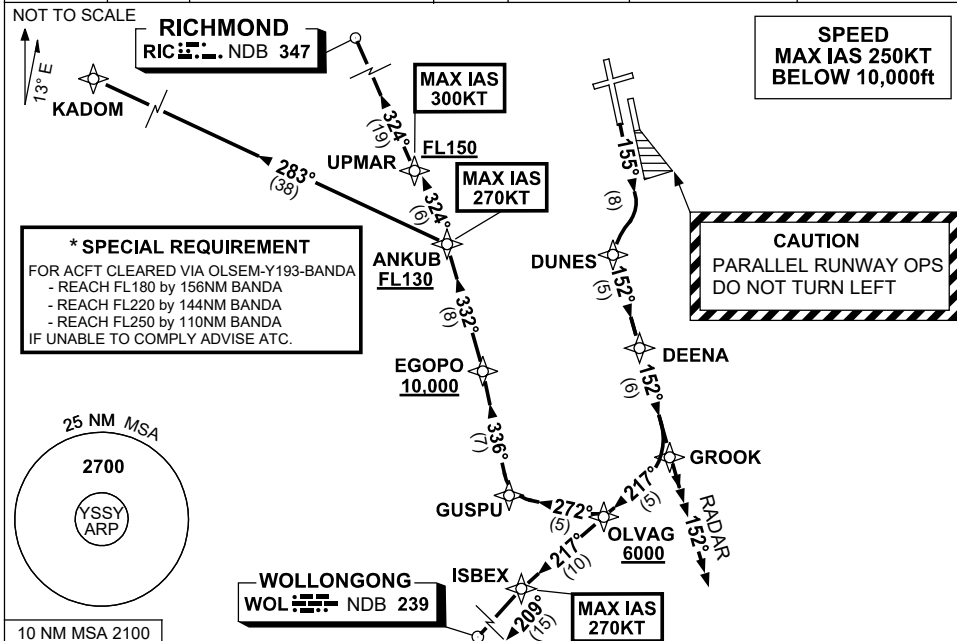


STANDARD INSTRUMENT DEPARTURES (SID) RWY 16R GROOK ONE (RNAV) SYDNEY/KINGSFORD SMITH, NSW (YSSY)

12 JUN 2025

ATIS 118.55	ACD 133.8	SMC E OF RWY 16R/34L 121.7 W OF RWY 16R/34L 126.5	TWR 120.5	DEP(N) N&E 123.0	DEP(S) S,W&NW 129.7	APP(CURFEW HR) 128.3
----------------	--------------	---	--------------	---------------------	------------------------	-------------------------



DEPARTURE: GROOK ONE

CAUTION: Parallel runway operations - DO NOT TURN LEFT

- GRAD 3.3%
- Track 155°

RWY 16R

- As soon as practicable turn RIGHT, track DCT to DUNES
- Turn LEFT track 152° to DEENA
- Track 152° to GROOK

TRANSITIONS:

- RADAR**
- From GROOK continue tracking 152°
 - Expect radar vectors to cleared route
 - For ACFT cleared via OLSEM
 - * See SPECIAL REQUIREMENT above

- KADOM**
- MAX IAS 270KT until ANKUB
 - From GROOK turn RIGHT track 217° to OLVAG
 - **Cross** OLVAG AT or ABV 6000ft
 - Turn RIGHT, track 272° to GUSPU
 - Turn RIGHT, track 336° to EGOPO
 - **Cross** EGOPO AT or ABV 10,000ft
 - Turn LEFT, track 332° to ANKUB
 - **Cross** ANKUB AT or ABV FL130 (RQ GRAD TO ANKUB: 5.4%)
 - Turn LEFT, track 283° to KADOM then as cleared.

- RIC**
- MAX IAS 270KT until ANKUB
 - From GROOK turn RIGHT track 217° to OLVAG
 - **Cross** OLVAG AT or ABV 6000ft
 - Turn RIGHT, track 272° to GUSPU
 - Turn RIGHT, track 336° to EGOPO
 - **Cross** EGOPO AT or ABV 10,000ft
 - Turn LEFT, track 332° to ANKUB
 - **Cross** ANKUB AT or ABV FL130 (RQ GRAD TO ANKUB: 5.4%)
 - MAX IAS 300KT until UPMAR
 - Turn LEFT, track 324° to UPMAR
 - **Cross** UPMAR AT or ABV FL150
 - Track 324° to RIC, then as cleared.

- WOL**
- MAX IAS 270KT until ISBEX
 - From GROOK turn RIGHT track 217° to OLVAG
 - **Cross** OLVAG AT or ABV 6000ft
 - Track 217° to ISBEX
 - Turn LEFT, track 209° to WOL, then as cleared.

Changes: ATIS FREQ REMOVED, Editorial.

SSYDP10-183