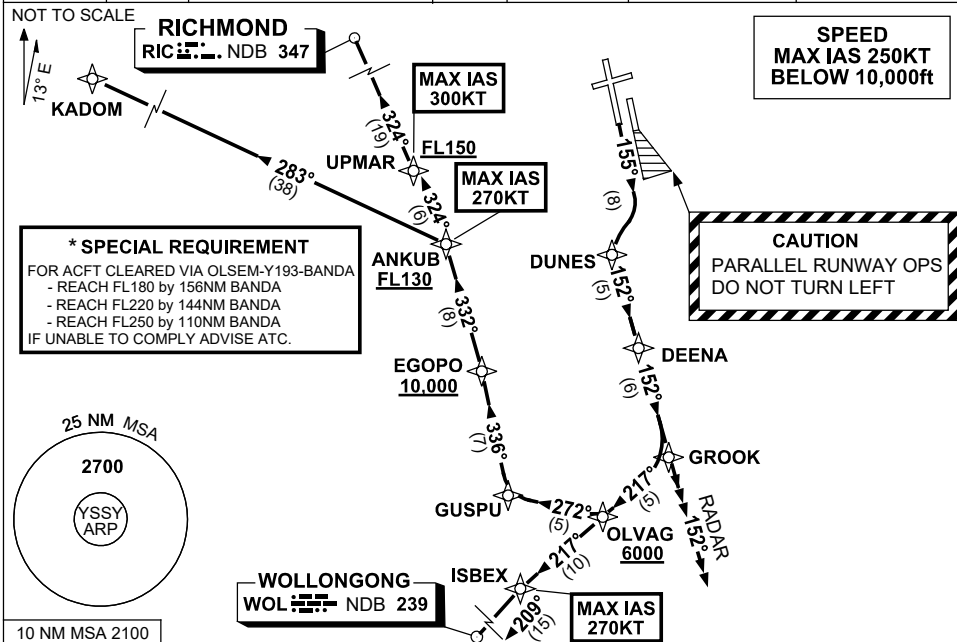


SYDNEY/KINGSFORD SMITH, NSW (YSSY)

12 JUN 2025

ATIS 118.55	ACD 133.8	SMC E OF RWY 16R/34L 121.7 W OF RWY 16R/34L 126.5	TWR 120.5	DEP(N) N&E 123.0	DEP(S) S,W&NW 129.7	APP(CURFEW HR) 128.3
----------------	--------------	---	--------------	---------------------	------------------------	-------------------------



DEPARTURE: GROOK ONE

CAUTION: Parallel runway operations - DO NOT TURN LEFT

- GRAD 3.3%
- Track 155°
- As soon as practicable turn RIGHT, track DCT to DUNES
- Turn LEFT track 152° to DEENA
- Track 152° to GROOK

TRANSITIONS:

RADAR • From GROOK continue tracking 152°
• Expect radar vectors to cleared route
• For ACFT cleared via OLSEM
* See SPECIAL REQUIREMENT above

KADOM

- MAX IAS 270KT until ANKUB
- From GROOK turn RIGHT track 217° to OLVAG
 - Cross** OLVAG AT or ABV 6000ft
- Turn RIGHT, track 272° to GUSPU
- Turn RIGHT, track 336° to EGOPO
 - Cross** EGOPO AT or ABV 10,000ft
- Turn LEFT, track 332° to ANKUB
 - Cross** ANKUB AT or ABV FL130 (RQ GRAD to ANKUB: 5.4%)
- Turn LEFT, track 283° to KADOM then as cleared.

RIC

MAX IAS 270KT until ANKUB

- From GROOK turn RIGHT track 217° to OLVAG
Cross OLVAG AT or ABV 6000ft
- Turn RIGHT, track 272° to GUSPU
- Turn RIGHT, track 336° to EGOPO
Cross EGOPO AT or ABV 10,000ft
- Turn LEFT, track 332° to ANKUB
Cross ANKUB AT or ABV FL130
(RQ GRAD TO ANKUB: 5.4%)
MAX IAS 300KT until UPMAR
- Turn LEFT, track 324° to UPMAR
Cross UPMAR AT or ABV FL150
- Track 324° to RIC, then as cleared.

WOL

MAX IAS 270KT until ISBEX
om GROOK turn RIGHT track 217°
OLVAG
Cross OLVAG AT or ABV 6000ft

- Track 217° to ISBEX
- Turn LEFT, track 209° to WOL, then as cleared.

Changes: ATIS FREQ REMOVED, Editorial.

SSYDP10-183