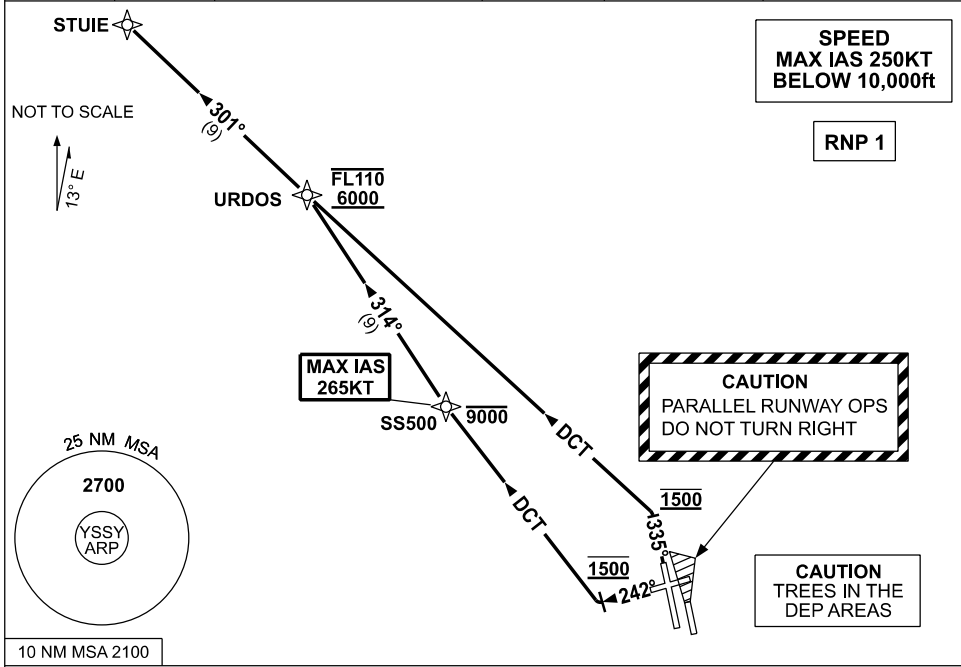


**STANDARD INSTRUMENT DEPARTURES (SID)
STUIE ONE (JET) (RNAV)
SYDNEY/KINGSFORD SMITH, NSW (YSSY)**

09 JUL 2026

ATIS 118.55	ACD 133.8	SMC E OF RWY 16R/34L 121.7 W OF RWY 16R/34L 126.5	TWR 120.5	DEP(S) 129.7	APP (RIC) 135.9
----------------	--------------	---	--------------	-----------------	--------------------



DEPARTURE: STUIE ONE

RWY 34L

CAUTION: Parallel runway operations - DO NOT TURN RIGHT
 GRAD 3.3%
 • Track 335°
 • AT 1500ft, turn LEFT, track DCT to URDOS
Cross URDOS BTN 6000ft and FL110
 (RQ GRAD to URDOS: 4.9%)

RWY 25

GRAD 3.9% to 300ft, then 3.3%
 MAX IAS 265KT until SS500
 • Track 242°
 • AT 1500ft, turn RIGHT, track DCT to SS500
Cross SS500 AT or BLW 9000ft
 • Track 314° to URDOS
Cross URDOS BTN 6000ft and FL110
 (RQ GRAD to URDOS: 3.6%)

STUIE • From URDOS, track 301° to STUIE