

**STANDARD INSTRUMENT DEPARTURES (SID)  
RWY 34R OLSEM ONE (JET) (RNAV)  
SYDNEY/KINGSFORD SMITH, NSW (YSSY)**

09 JUL 2026

ATIS 118.55	ACD 133.8	SMC E OF RWY 16R/34L 121.7 W OF RWY 16R/34L 126.5	TWR 124.7	DEP(N) 123.0
----------------	--------------	---	--------------	-----------------

NOT TO SCALE

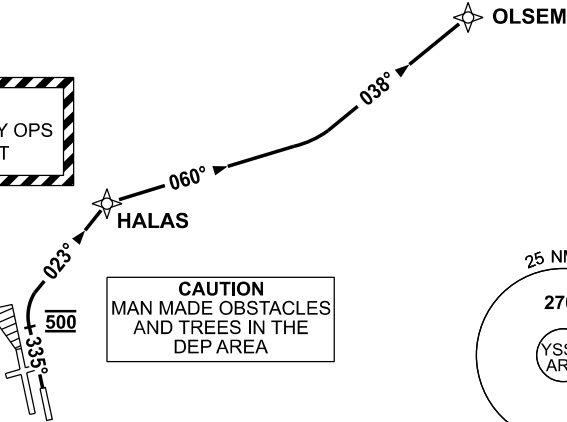


**SPECIAL REQUIREMENT**  
FOR ACFT CLEARED VIA OLSEM-Y193-BANDA  
- REACH FL 180 by 156NM BANDA  
- REACH FL 220 by 144NM BANDA  
- REACH FL 250 by 110NM BANDA  
IF UNABLE TO COMPLY ADVISE ATC.

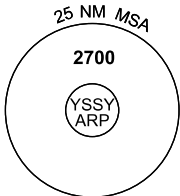
**SPEED  
MAX IAS 250KT  
BELOW 10,000ft**

**RNP1**

**CAUTION  
PARALLEL RUNWAY OPS  
DO NOT TURN LEFT**



**CAUTION  
MAN MADE OBSTACLES  
AND TREES IN THE  
DEP AREA**



10 NM MSA 2100

**OLSEM ONE DEPARTURE**

CAUTION: Parallel runway operations - DO NOT TURN LEFT

**RWY 34R**

- GRAD 4.8% to 1500ft then 3.3%
- Track 335°
- AT 500ft turn RIGHT intercept and track 023° to HALAS
- At HALAS turn RIGHT track 060° to intercept and track 038° to OLSEM, then as cleared
- See SPECIAL REQUIREMENT above