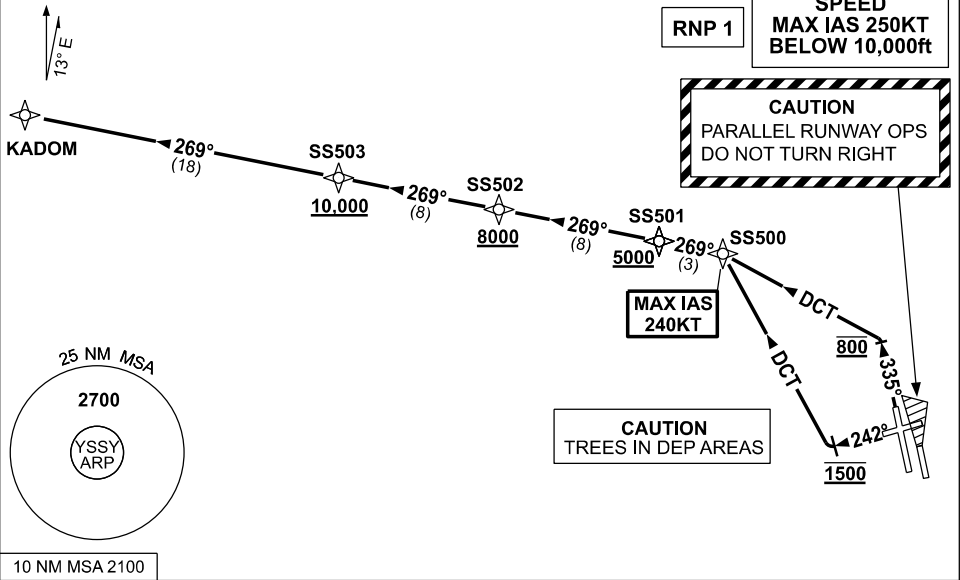


**STANDARD INSTRUMENT DEPARTURES (SID)
KADOM TWO (JET) (RNAV)
SYDNEY/KINGSFORD SMITH, NSW (YSSY)**

09 JUL 2026

ATIS 118.55	ACD 133.8	SMC E OF RWY 16R/34L 121.7 W OF RWY 16R/34L 126.5	TWR 120.5	DEP(S) 129.7	DEP(W) 118.4
----------------	--------------	---	--------------	-----------------	-----------------

NOT TO SCALE



DEPARTURE: KADOM TWO

RWY 34L

CAUTION: Parallel runway operations - DO NOT TURN RIGHT

- Grad 3.3%
MAX IAS 240KT until SS500
- Track 335°
- AT 800ft, turn LEFT, track DCT to SS500

RWY 25

- Grad 5.8% to 1500ft, then 3.3%
MAX IAS 240KT until SS500
- Track 242°
- AT 1500ft, turn RIGHT, track DCT to SS500

KADOM

- From SS500, track 269° to SS501
Cross SS501 AT or ABV 5000ft
- Track 269° to SS502
Cross SS502 AT or ABV 8000ft
(RQ GRAD to SS502: 6.0%)
- Track 269° to SS503
Cross SS503 AT or ABV 10000ft
(RQ GRAD to SS503: 4.3% FM SS502)
- Track 269° to KADOM