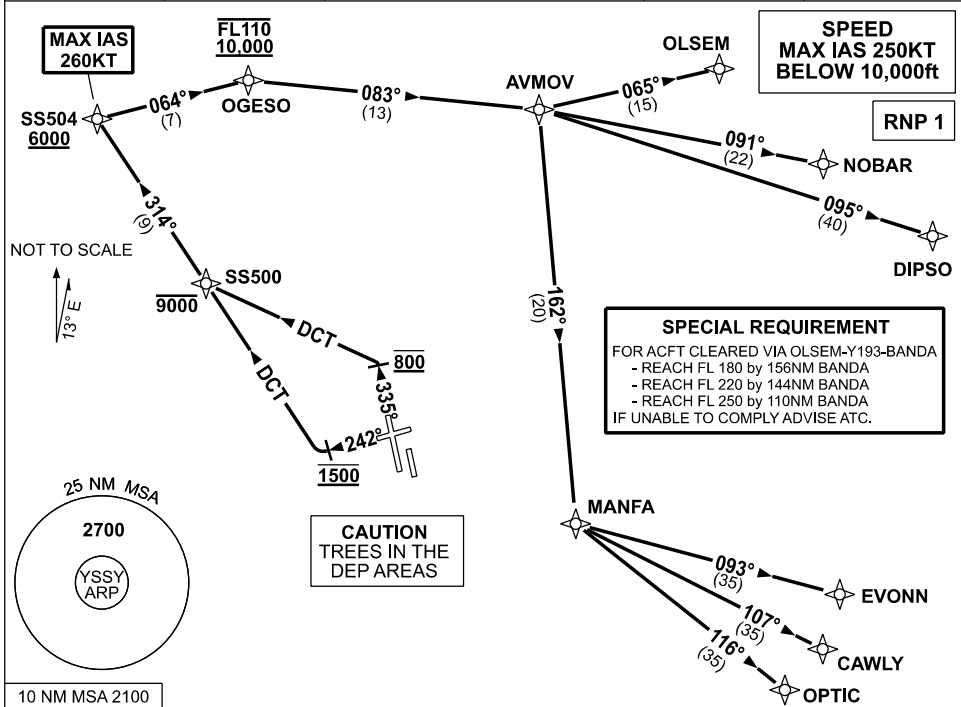


**STANDARD INSTRUMENT DEPARTURES (SID)  
AVMOV ONE DEPARTURE (RNAV)  
SYDNEY/KINGSFORD SMITH, NSW (YSSY)**

09 JUL 2026

ATIS 118.55	ACD 133.8	SMC E OF RWY 16R/34L 121.7 W OF RWY 16R/34L 126.5	TWR 120.5	DEP(N) N&E 123.0
----------------	--------------	---	--------------	---------------------



**DEPARTURE: AVMOV ONE**

**RWY 25**

- GRAD 3.9% to 300ft, then 3.3%
- Track 242°
- AT 1500ft turn RIGHT, track DCT to SS500
- Cross** SS500 AT or BLW 9000ft

**RWY 34L**

- GRAD 5.6% to 800ft, then 3.3%
- Track 335°
- AT 800ft turn LEFT, track DCT to SS500
- Cross** SS500 AT or BLW 9000ft

**From SS500**

- MAX IAS 260KT until SS504
- Track 314° to SS504
- Cross** SS504 AT or ABV 6000ft
- Turn RIGHT, track 064° to OGESO
- Cross** OGESO between 10,000ft and FL110 (RQ GRAD to OGESO: 6.9%)
- Turn RIGHT, track 083° to AVMOV

**TRANSITIONS:**

- OLSEM**
  - Track 065° to OLSEM
  - See SPECIAL REQUIREMENT above
- NOBAR**
  - Track 091° to NOBAR
- DIPSO**
  - Track 095° to DIPSO
- EVONN**
  - Track 162° to MANFA
  - Turn LEFT, track 093° to EVONN
- CAWLY**
  - Track 162° to MANFA
  - Turn LEFT, track 107° to CAWLY
- OPTIC**
  - Track 162° to MANFA
  - Turn LEFT, track 116° to OPTIC

Changes: NEW PROCEDURE.

SSYDP02-187