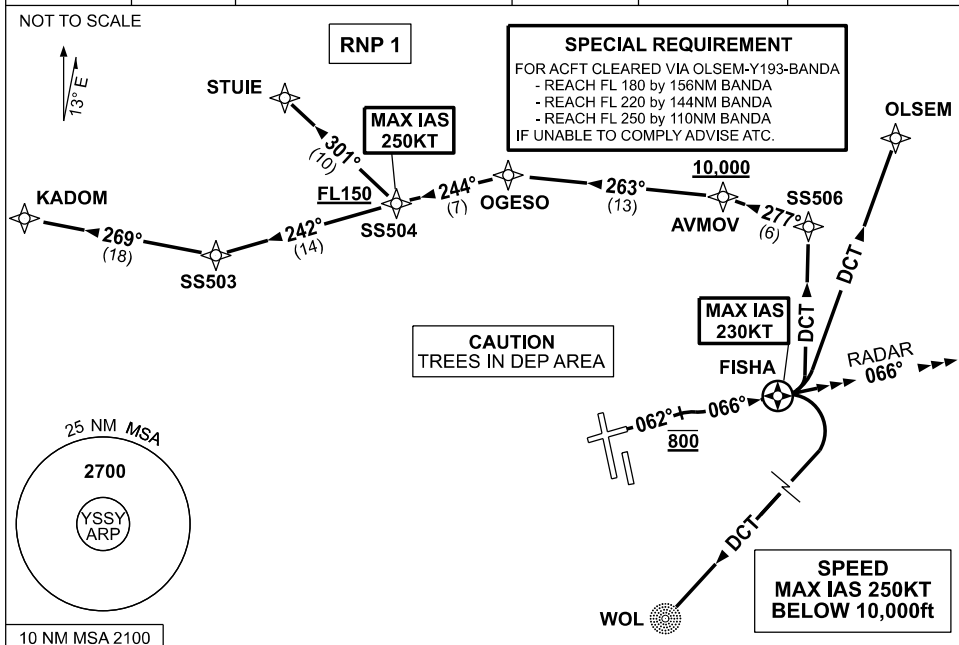


**STANDARD INSTRUMENT DEPARTURES (SID)
RWY 07 FISHA ONE (JET) (RNAV)
SYDNEY/KINGSFORD SMITH, NSW (YSSY)**

09 JUL 2026

ATIS 118.55	ACD 133.8	SMC E OF RWY 16R/34L 121.7 W OF RWY 16R/34L 126.5	TWR 120.5	DEP(N) N&E 123.0	DEP(S) S,W&NW 129.7
----------------	--------------	---	--------------	---------------------	------------------------



DEPARTURE: FISHA ONE

RWY 07

- GRAD 5% to 1500ft, then 3.3%
- MAX IAS 230KT until FISHA
- Track 062°
- AT 800ft turn RIGHT, intercept and track 066° to FISHA

TRANSITIONS:

- RADAR** • Continue tracking 066°
• Expect radar vectors to cleared route
- STUIE** MAX IAS 250KT until SS504
• Turn LEFT track DCT to SS506
• Turn LEFT, track 277° to AVMOV
• **Cross** AVMOV AT or ABV 10,000ft (RQ GRAD TO AVMOV: 6.4%)
• Turn LEFT, track 263° to OGESO
• Turn LEFT, track 244° to SS504
• **Cross** SS504 AT or ABV FL150 (RQ GRAD TO SS504: 4.1% FM AVMOV)
• Turn RIGHT, track 301° to STUIE

- KADOM** MAX IAS 250KT until SS504
• Turn LEFT track DCT to SS506
• Turn LEFT, track 277° to AVMOV
• **Cross** AVMOV AT or ABV 10,000ft (RQ GRAD TO AVMOV: 6.4%)
• Turn LEFT, track 263° to OGESO
• Turn LEFT, track 244° to SS504
• **Cross** SS504 AT or ABV FL150 (RQ GRAD TO SS504: 4.1% FM AVMOV)
• Turn LEFT, track 242° to SS503
• Turn RIGHT, track 269° to KADOM

- WOLLONGONG (WOL)** • Turn RIGHT, track DCT to WOL NDB

- OLSEM** • Turn LEFT, track DCT to OLSEM
• See SPECIAL REQUIREMENT above