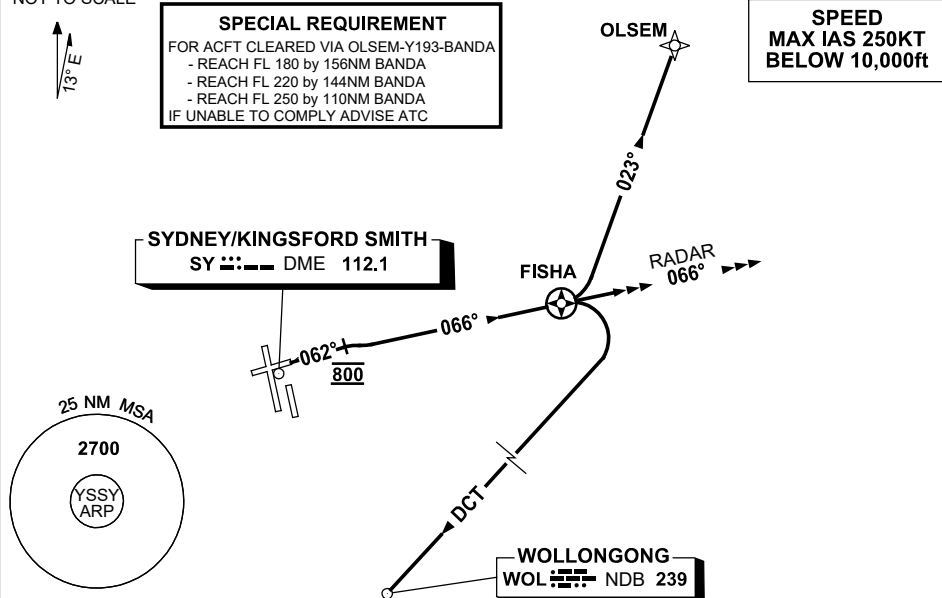


# STANDARD INSTRUMENT DEPARTURES (SID) RWY 07 FISHA NINE (JET) (RNAV) SYDNEY/KINGSFORD SMITH, NSW (YSSY)

12 JUN 2025

|                |              |   |              |                     |                        |
|----------------|--------------|---|--------------|---------------------|------------------------|
| ATIS<br>118.55 | ACD<br>133.8 | SMC<br>E OF RWY 16R/34L 121.7<br>W OF RWY 16R/34L 126.5 | TWR<br>120.5 | DEP(N) N&E<br>123.0 | DEP(S) S,W&NW<br>129.7 |
|----------------|--------------|---|--------------|---------------------|------------------------|

NOT TO SCALE



## DEPARTURE: FISHA NINE

**RWY 07**

- GRAD 4.7% to 1500ft, then 3.3%
- Track 062°, at 800ft turn RIGHT intercept and track 066° to FISHA then follow transition instructions

## TRANSITIONS:

### RADAR

- At FISHA CONTINUE tracking 066°
- Expect radar vectors to cleared route

### WOLLONGONG (WOL)

- At FISHA turn RIGHT
- Track DCT to WOL NDB, then as cleared

### OLSEM

- At FISHA turn LEFT
- Track DCT to OLSEM (approx 023°), then as cleared
- See SPECIAL REQUIREMENT above