

STANDARD INSTRUMENT ARRIVAL (STAR) RUPEM ONE ARRIVAL (RNAV) RICHMOND, NSW (YSRI)

09 JUL 2026

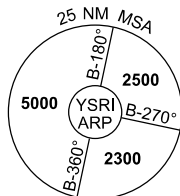
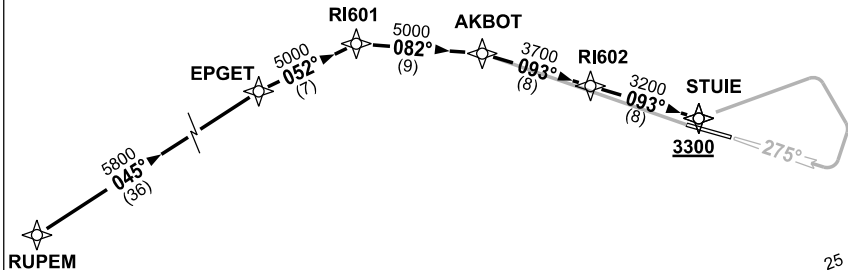
ATIS/AWIS (AH)	APP	TWR	SMC	FIA (AH)	CTAF+AFRU (AH)	AFRU+PAL	Bearings are MAG ELEV in FT AMSL
126.3 274.55	135.9 363.8	135.5 257.3	128.25	SY CEN 124.55	135.5	135.5	

NOT TO SCALE



**SPEED
MAX IAS 250KT
BELOW 10,000ft**

RNP 1



10 NM MSA 3300

ARRIVAL: RUPEM ONE

RWY 10

- From RUPEM track 045° to EPGET
- Turn RIGHT, track 052° to RI601
- Turn RIGHT track 082° to AKBOT for RNP RWY 10 APPROACH.

RWY 28

- From RUPEM track 045° to EPGET
- Turn RIGHT, track 052° to RI601
- Turn RIGHT track 082° to AKBOT
- Turn RIGHT track 093° to RI602
- Track 093° to STUIE
- **Cross** STUIE AT or ABV 3300ft for ILS-Z or RNP or LOC-Z RWY 28 APPROACH.

**COMMUNICATIONS FAILURE: PROCEDURE IN IMC
IF ABLE CTC SY APP +61 2 9556 6515**

- Squawk 7600, comply with vertical navigation requirements, but not below MSA.
- Track via the latest STAR clearance to the nominated runway, then fly the most suitable approach in accordance with ERSA EMERG Section 1.5.