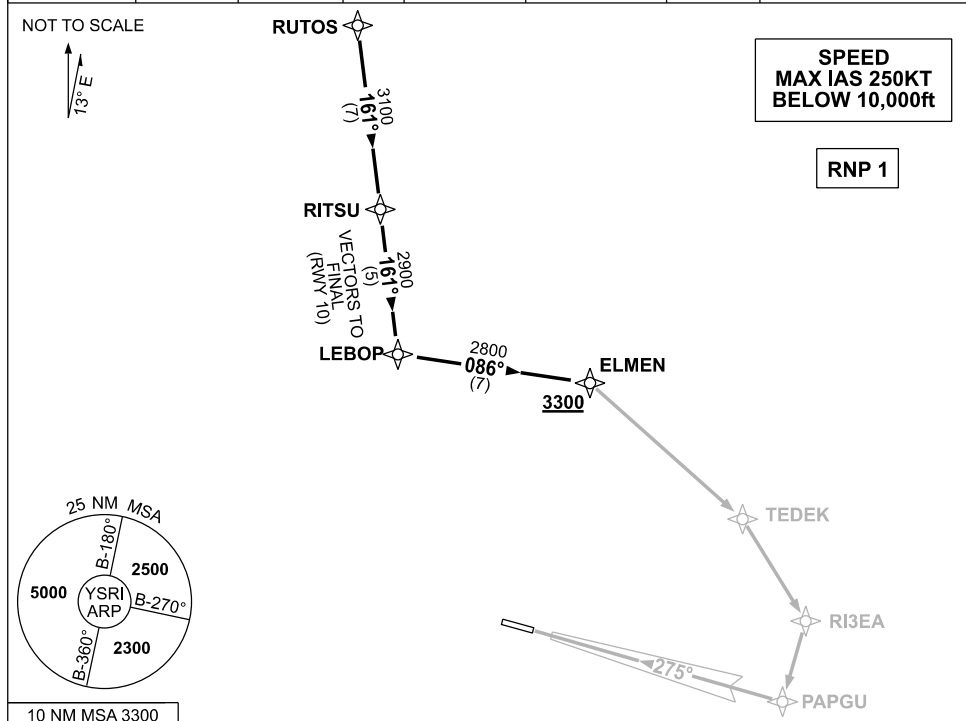


# STANDARD INSTRUMENT ARRIVAL (STAR) RITSU ONE ARRIVAL (RNAV) RICHMOND, NSW (YSRI)

09 JUL 2026

|                |             |             |        |               |                |          |                                     |
|----------------|-------------|-------------|--------|---------------|----------------|----------|-------------------------------------|
| ATIS/AWIS (AH) | APP         | TWR         | SMC    | FIA (AH)      | CTAF+AFRU (AH) | AFRU+PAL | Bearings are MAG<br>ELEV in FT AMSL |
| 126.3 274.55   | 135.9 363.8 | 135.5 257.3 | 128.25 | SY CEN 124.55 | 135.5          | 135.5    |                                     |



**TRANSITION:**

**RUTOS:** • From RUTOS, track 161° to RITSU

**ARRIVAL: RITSU ONE**

**RWY 10**

- From RITSU, track 161° to LEBOP
- Expect vectors for RNP RWY 10 approach

**RWY 28**

- From RITSU, track 161° to LEBOP
- Turn LEFT, track 086° to ELMEN for ILS-Z or RNP or LOC-Z RWY 28 approach
- Cross** ELMEN AT or ABV 3300ft

**COMMUNICATIONS FAILURE: PROCEDURE IN IMC  
IF ABLE CTC SY APP +61 2 9556 6515**

- Squawk 7600, comply with vertical navigation requirements, but not below MSA.
- Track via the latest STAR clearance to the nominated runway, then fly the most suitable approach in accordance with ERS A EMERG Section 1.5.