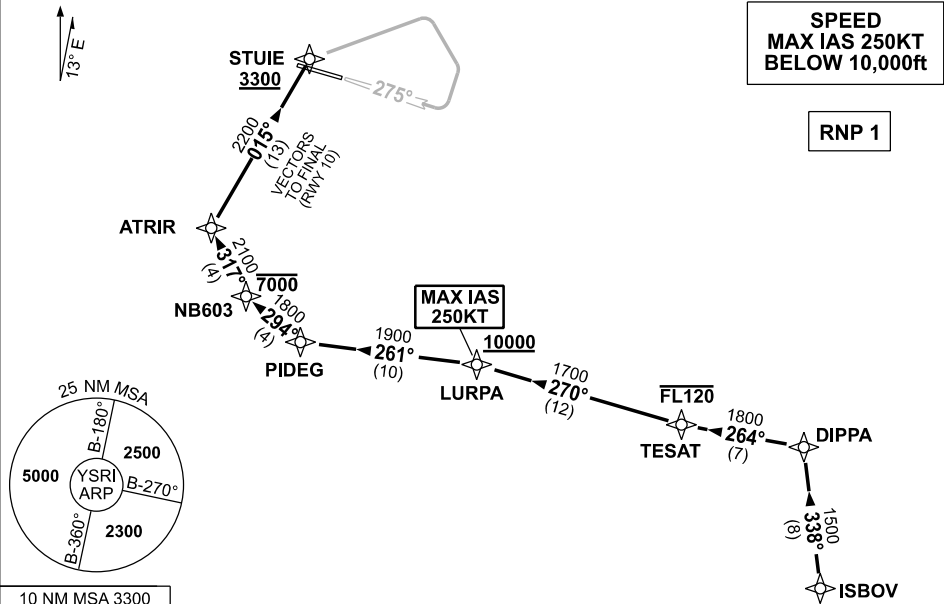


STANDARD INSTRUMENT ARRIVAL (STAR) DIPPA ONE ARRIVAL (RNAV) RICHMOND, NSW (YSRI)

09 JUL 2026

ATIS/AWIS (AH) 126.3 274.55	APP 135.9 363.8	TWR 135.5 257.3	SMC 128.25	FIA (AH) SY CEN 124.55	CTAF+AFRU (AH) 135.5	AFRU+PAL 135.5	Bearings are MAG ELEV in FT AMSL
--------------------------------	--------------------	--------------------	---------------	---------------------------	-------------------------	-------------------	-------------------------------------

NOT TO SCALE



10 NM MSA 3300

TRANSITION:

ISBOV: • From ISBOV, track 338° to DIPPA

ARRIVAL: DIPPA ONE

- From DIPPA, track 264° to TESAT
Cross TESAT AT or BLW FL120
- Turn **RIGHT**, track 270° to LURPA
Cross LURPA AT or ABV 10000ft
MAX IAS 250KT from LURPA
- Turn **LEFT**, track 261° to PIDEG
- Turn **RIGHT**, track 294° to NB603
Cross NB603 AT or BLW 7000ft
- Turn **RIGHT**, track 317° to ATRIR

RWY 10

- Track 015° to STUIE
Cross STUIE AT or ABV 3300ft
- **EXPECI** radar vectors to final

RWY 28

- Track 015° to STUIE
for ILS-Z or RNP RWY 28 or
LOC-Z RWY 28 APPROACH
Cross STUIE AT or ABV 3300ft

**COMMUNICATIONS FAILURE: PROCEDURE IN IMC
IF ABLE CTC SY APP +61 2 9556 6515**

Squawk 7600, comply with vertical navigation requirements, but not below MSA.
Track via the latest STAR clearance to the nominated runway, then fly the most suitable approach in accordance with ERSA EMERG Section 1.5.