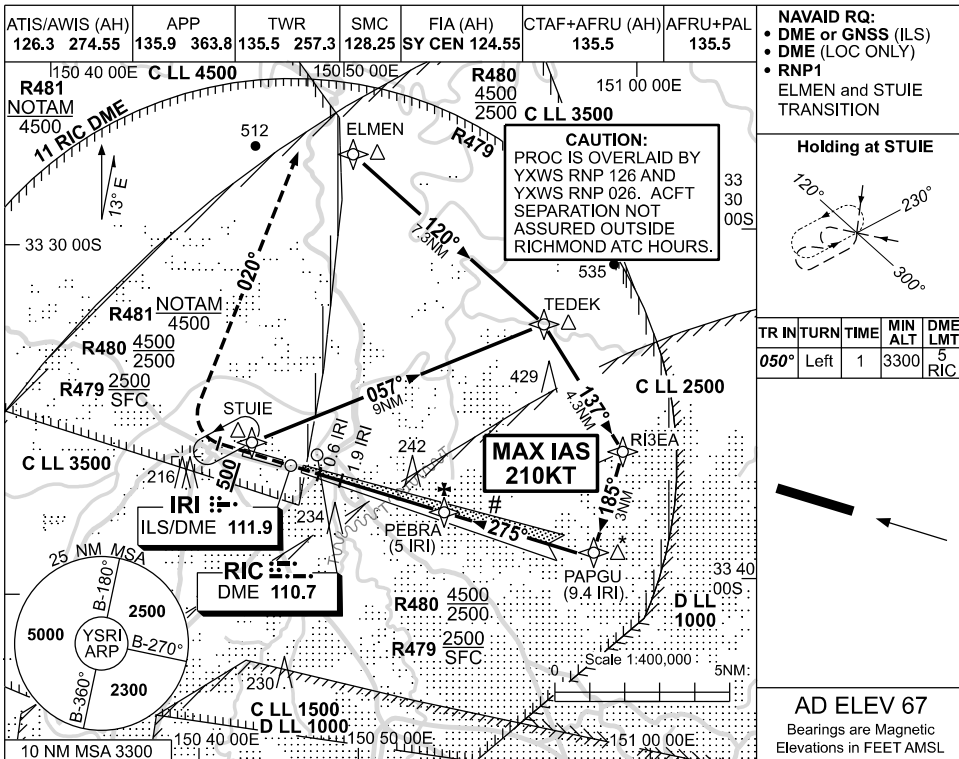


USE QNH

ILS-Z or LOC-Z RWY 28
RICHMOND, NSW (YSRI)

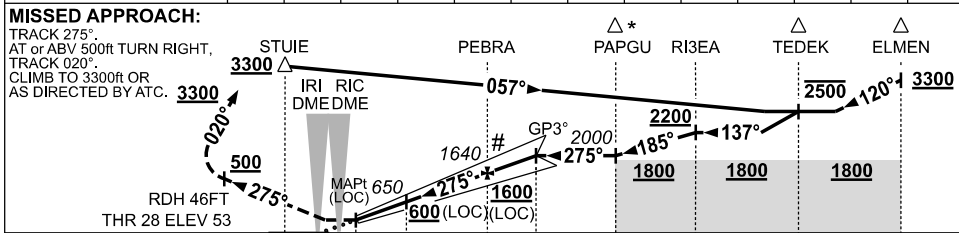
09 JUL 2026



TR IN	TURN	TIME	MIN ALT	DME LMT
050°	Left	1	3300	5 RIC

AD ELEV 67
 Bearings are Magnetic
 Elevations in FEET AMSL

NM TO IRI DME	1.6	1.9	2	3	4	5	6	6.1				
ALT (3° APCH PATH)	570	650	680	1000	1320	1640	1960	2000				



NM TO IRI DME	0	0.6	1.9	5	6.1	9.4					
NM TO THR 28	0	0.5	1.7	4.8	6	9.3	12.3	16.6	23.9		

- NOTES**
- MAX IAS: RI3EA : 210KT
 - ACFT MAY BE RADAR VECTORED TO IAF.
 - IF MISSED APCH CONDUCTED PRIOR TO 0.6 IRI, CLIMB NOT ABV 2500ft UNTIL 0.6 IRI.
 - USE OF GP RESTR TO WI 7° OF RWY CL.

CATEGORY	A	B	C	D
S-I ILS		353 (300)	0.8	
S-I LOC		570 (517-2.0)		
CIRCLING	800 (733-2.4)		1090 (1023-4.0)	1160 (1093-5.0)
ALTERNATE	(1233-4.4)		(1523-6.0)	(1593-7.0)

Changes: REVISED PROCEDURE, MAGNETIC VARIATIONS

SR1101-187