

**STANDARD INSTRUMENT DEPARTURES (SID)
NESSY ONE DEPARTURE (RNAV)
RICHMOND, NSW (YSRI)**

09 JUL 2026

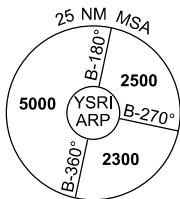
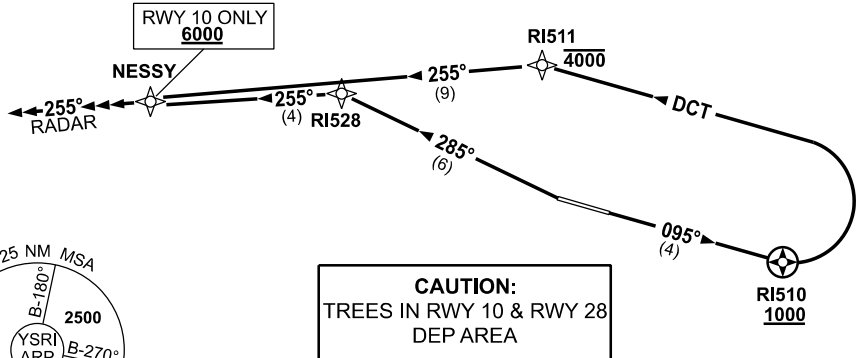
ATIS/AWIS (AH) 126.3 274.55	SMC 128.25	TWR 135.5 257.3	APP 135.9 363.8	FIA (AH) SY CEN 124.55	CTAF+AFRU (AH) 135.5	AFRU+PAL 135.5	Bearings are Magnetic Elevations in FEET AMSL
--------------------------------	---------------	--------------------	--------------------	---------------------------	-------------------------	-------------------	--

NOT TO SCALE



**SPEED
MAX IAS 250KT
BELOW 10,000ft**

RNP 1



10 NM MSA 3300

DEPARTURE: NESSY ONE

RWY 10

- GRAD 3.7% to 300ft, then 3.3%
- Track 095° to RI510
- Cross** RI510 AT or ABV 1000ft (RQ GRAD to RI510: 4.0%)
- Turn LEFT, track DCT to RI511
- Cross** RI511 AT or BLW 4000ft
- Track 255° to NESSY
- Cross** NESSY AT or ABV 6000ft (RQ GRAD to NESSY from RI511: 3.7%)
- At NESSY continue tracking 255°
- Expect radar vectors to cleared route

RWY 28

- GRAD 4.8% to 2600ft, then 3.3%
- Track 285° to RI528
- Turn LEFT, track 255° to NESSY
- At NESSY continue tracking 255°
- At or ABV 6000ft expect radar vectors to cleared route

COMMUNICATION FAILURE PROCEDURE

On recognition of communication failure:

- Squawk 7600
- Maintain last assigned vector for two minutes, and
- CLIMB IF NECESSARY TO MINIMUM SAFE ALTITUDE, to maintain terrain clearance, then
- proceed in accordance with the latest ATC route clearance acknowledged.