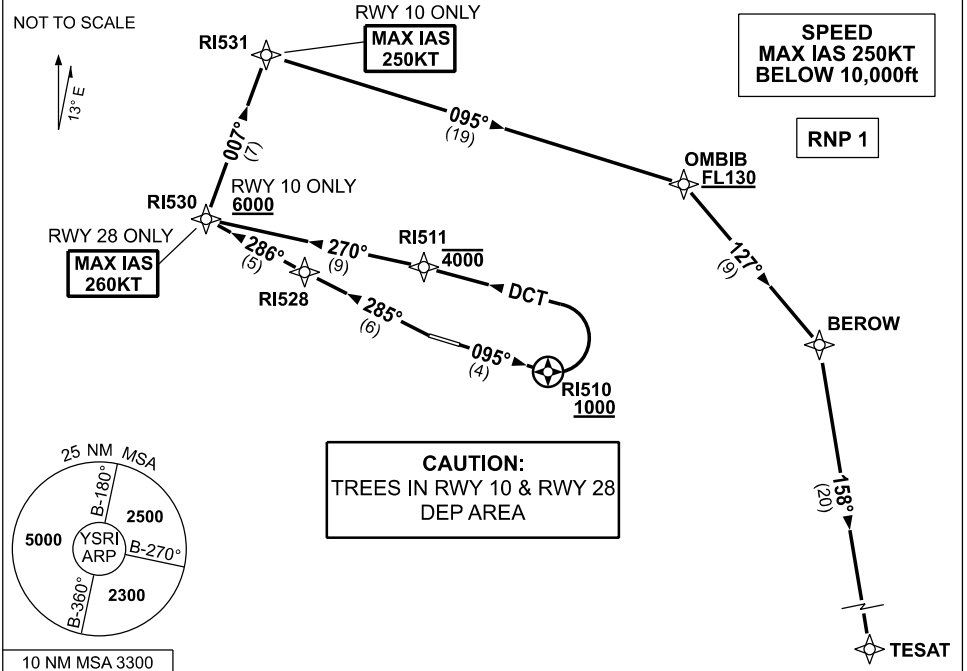


**STANDARD INSTRUMENT DEPARTURES (SID)
BEROW ONE DEPARTURE (RNAV)
RICHMOND, NSW (YSRI)**

09 JUL 2026

ATIS/AWIS (AH) 126.3 274.55	SMC 128.25	TWR 135.5 257.3	APP 135.9 363.8	FIA (AH) SY CEN 124.55	CTAF+AFRU (AH) 135.5	AFRU+PAL 135.5	Bearings are Magnetic Elevations in FEET AMSL
--------------------------------	---------------	--------------------	--------------------	---------------------------	-------------------------	-------------------	--



DEPARTURE: BEROW ONE

RWY 10

- GRAD 3.7 to 300ft, then 3.3%
- MAX IAS 250KT until RI531
- Track 095° to RI510
- Cross** RI510 AT or ABV 1000ft (RQ GRAD to RI510: 4.0%)
- Turn LEFT, track DCT to RI511
- Cross** RI511 AT or BLW 4000ft
- Track 270° to RI530
- Cross** RI530 AT or ABV 6000ft
- Turn RIGHT, track 007° to RI531
- Turn RIGHT, track 095° to OMBIB
- Cross** OMBIB AT or ABV FL130 (RQ GRAD to OMBIB: 4.7% FM RI511)
- Turn RIGHT, track 127° to BEROW

RWY 28

- GRAD 4.8% to 2600ft, then 3.3%
- MAX IAS 260KT until RI530
- Track 285° to RI528
- Turn RIGHT, track 286° to RI530
- Turn RIGHT, track 007° to RI531
- Turn RIGHT, track 095° to OMBIB
- Cross** OMBIB AT or ABV FL130 (RQ GRAD to NB251: 6.2%)
- Turn RIGHT, track 127° to BEROW

TRANSITIONS: TESAT

- From BEROW, track 158° to TESAT

COMMUNICATION FAILURE PROCEDURE

On recognition of communication failure:

- Squawk 7600
- Maintain last assigned vector for two minutes, and
- CLIMB IF NECESSARY TO MINIMUM SAFE ALTITUDE, to maintain terrain clearance, then
- proceed in accordance with the latest ATC route clearance acknowledged.