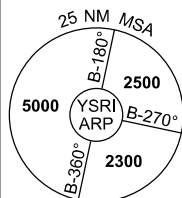
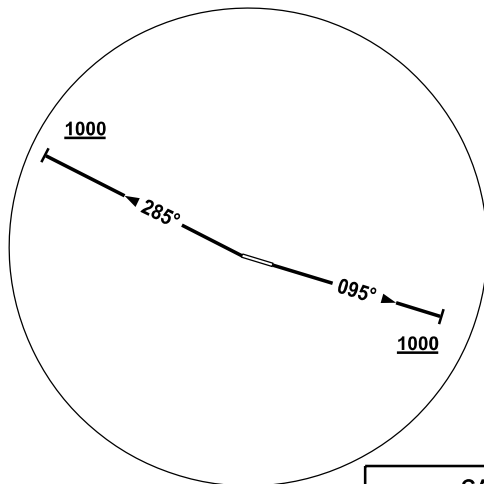


**STANDARD INSTRUMENT DEPARTURES (SID)
RICHMOND FIVE DEPARTURE (RADAR)
RICHMOND, NSW (YSRI)**

09 JUL 2026

| | | | | | | | |
|--------------------------------|---------------|--------------------|--------------------|---------------------------|-------------------------|-------------------|--|
| ATIS/AWIS (AH) 126.3 274.55 | SMC 128.25 | TWR 135.5 257.3 | APP 135.9 363.8 | FIA (AH) SY CEN 124.55 | CTAF+AFRU (AH) 135.5 | AFRU+PAL 135.5 | Bearings are Magnetic Elevations in FEET AMSL |
|--------------------------------|---------------|--------------------|--------------------|---------------------------|-------------------------|-------------------|--|

NOT TO SCALE



CAUTION:
TREES IN RWY 10 & RWY 28
DEP AREA

10 NM MSA 3300

RICHMOND FIVE DEPARTURE (RADAR)

RWY 28

GRAD 4.8% to 2600ft, then 3.3%

- Track 285°
- At 1000ft BUT NOT BEFORE DER turn to assigned heading

RWY 10

GRAD 3.7% to 300ft, then 3.3%

- Track 095°
- At 1000ft BUT NOT BEFORE DER turn to assigned heading or track

COMMUNICATION FAILURE PROCEDURE

On recognition of communication failure:

- Squawk 7600
- Maintain last assigned vector for two minutes, and
- CLIMB IF NECESSARY TO MINIMUM SAFE ALTITUDE, to maintain terrain clearance, then
- proceed in accordance with the latest ATC route clearance acknowledged.