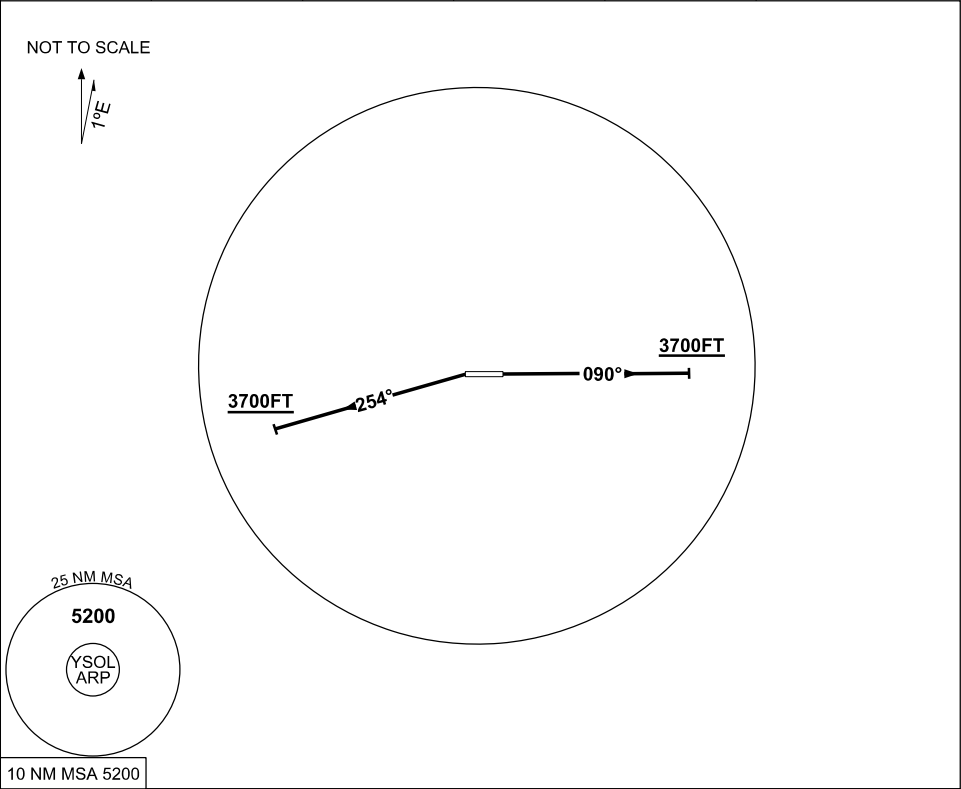


24 MAR 2022

AWIS 128.65	FIA ML CEN 125.7	CTAF+AFRU 126.7	PAL+AA 120.25	UNICOM 126.7	Bearings are Magnetic Elevations in FEET AMSL
----------------	---------------------	--------------------	------------------	-----------------	--



**SOLOMON ONE DEPARTURE**

**RWY 09**

- GRAD 4.0% to 3700FT thence 3.3%
- Track 090°
- At or above 3700FT turn as required
- Continue to climb to 5200FT
- Intercept flight plan route

**RWY 27**

- GRAD 4.0% to 3700FT thence 3.3%
- When passing DER Track 254°
- At or above 3700FT turn as required
- Continue to climb to 5200FT
- Intercept flight plan route