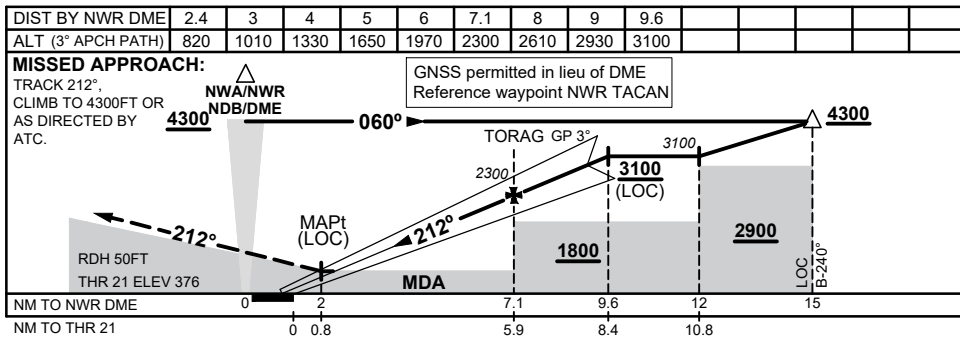
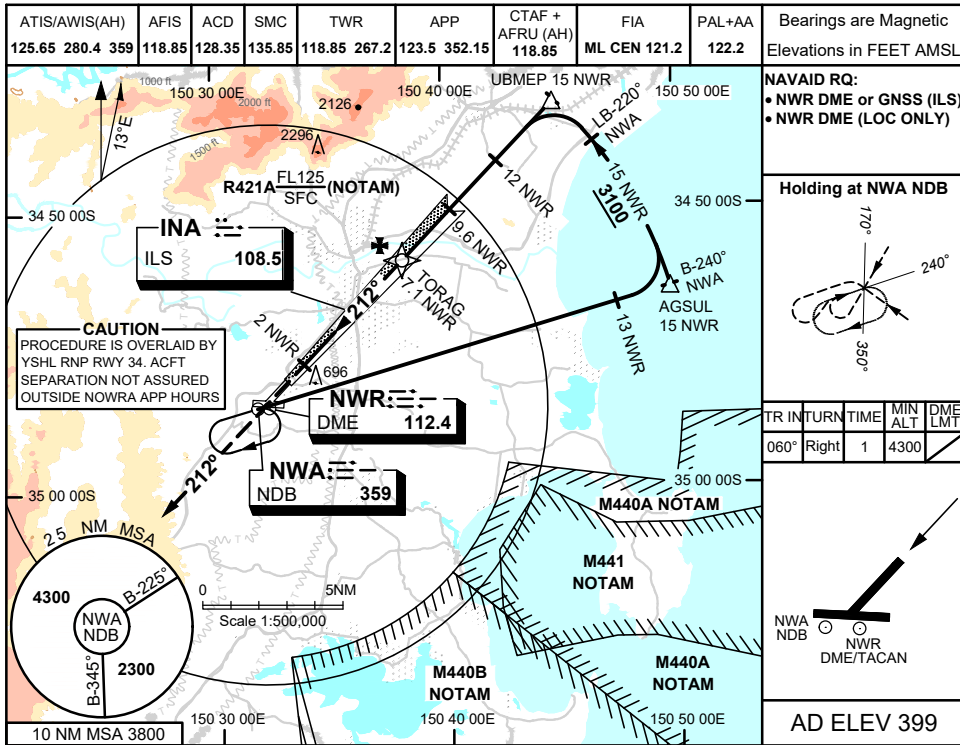


09 JUL 2026



NOTES

1. ACFT MAY BE RADAR VECTORED TO FINAL APCH.
2. RISING TERRAIN BTN DA AND RWY THR MAY CAUSE UNUSUAL RAD ALT INDICATIONS

| CATEGORY | A | B | C | D |
|-----------|-------------------------|------------------------|---------------------------|--------------------------|
| S-I ILS | | 723 (347 - 1.1) | (VIS 0.8 WITH ACTUAL QNH) | |
| S-I LOC | | 820 (444 - 1.7) | | |
| CIRCLING | 1320 (921 - 2.4) | | 1680 (1281 - 4.0) | 1810 (1411 - 5.0) |
| ALTERNATE | (1421 - 4.4) | | (1781 - 6.0) (1911 - 7.0) | |

Changes: 10 NM MSA

SNWII02-187