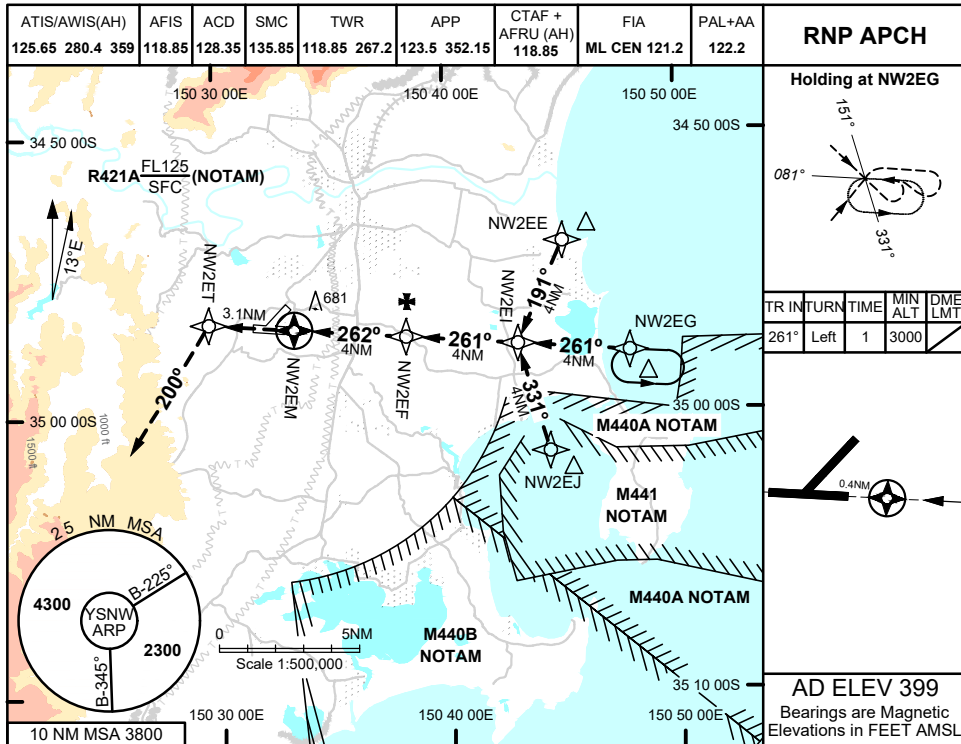
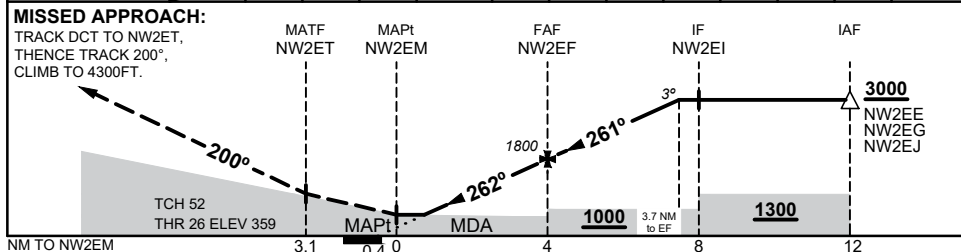


09 JUL 2026



NM TO NEXT WPT	NW2EM	1.2	2	3	NW2EF	1	2	3	3.7			
ALT (3° APCH PATH)		910	1170	1480	1800	2120	2440	2760	3000			



**NOTES**

- MAX IAS:  
 INITIAL : 200KTS  
 MA TURN : 210KTS
- PROC NOT AVBL VIA NW2EJ OR NW2EG HOLDING WITHOUT ATC APPROVAL WHEN M441 OR M440A ACTIVE

CATEGORY	A	B	C	D
LNAV	<b>910 (551 - 2.8)</b>			
CIRCLING	<b>1320 (921 - 2.4)</b>		<b>1680 (1281 - 4.0)</b>	<b>1810 (1411 - 5.0)</b>
ALTERNATE	(1421 - 4.4)		(1781 - 6.0)	(1911 - 7.0)

Changes: 10 NM MSA

SNWGN03-187