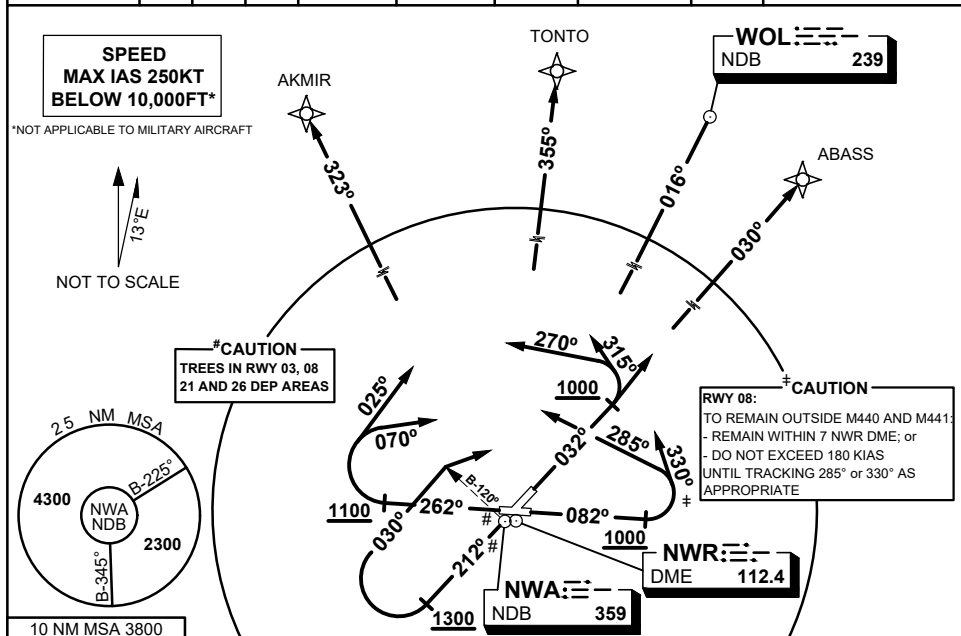


**STANDARD INSTRUMENT DEPARTURES (SID)  
RWYS NORTH  
NOWRA, NSW (YSNW)**

**09 JUL 2026**

ATIS/AWIS(AH)	AFIS	ACD	SMC	TWR	APP	CTAF + AFRU (AH)	FIA	PAL+AA	Bearings are Magnetic Elevations in FEET AMSL
125.65 280.4 359	118.85	128.35	135.85	118.85 267.2	123.5 352.15	118.85	ML CEN 121.2	122.2	



**AKMIR THREE ALPHA DEPARTURE  
TONTO FIVE ALPHA DEPARTURE**

**RWY 03#**

- GRAD 4.8% to 2600FT then 3.3% (EXC ABASS)
- Track 032°
- AT 1000FT, but not before DER:

**FOR ABASS**

- GRAD 3.3%
- Intercept route as cleared

**FOR WOL & TONTO**

- TURN LEFT, TRACK 315°
- Intercept route as cleared

**FOR AKMIR**

- TURN LEFT, TRACK 270°
- Intercept route as cleared

**RWY 08# †**

- GRAD 3.8% TO 2600FT then 3.3%
- TRACK 082°
- AT 1000FT, but not before DER:

**FOR ABASS & WOL**

- TURN LEFT, TRACK 330°
- Intercept route as cleared

**FOR TONTO & AKMIR**

- TURN LEFT, TRACK 285°
- Intercept route as cleared

**WOLLONGONG (WOL) FIVE ALPHA DEPARTURE  
ABASS FIVE ALPHA DEPARTURE**

**RWY 21#**

- GRAD 4.3% to 1300FT then 3.3%
- Track 212°
- AT 1300FT, but not before DER, TURN RIGHT, TRACK 030°:

**FOR AKMIR & TONTO**

- Intercept route as cleared

**FOR WOL & ABASS**

- After passing NWA B-120, TURN RIGHT
- Intercept route as cleared

**RWY 26#**

- GRAD 4.7% TO 1300FT then 3.3%
- TRACK 262°
- AT 1100FT, but not before DER, TURN RIGHT:

**FOR AKMIR & TONTO**

- TRACK 025°
- Intercept route as cleared

**FOR WOL & ABASS**

- TRACK 070°
- Intercept route as cleared

Changes: 10 NM MSA

SNWDP03-187

