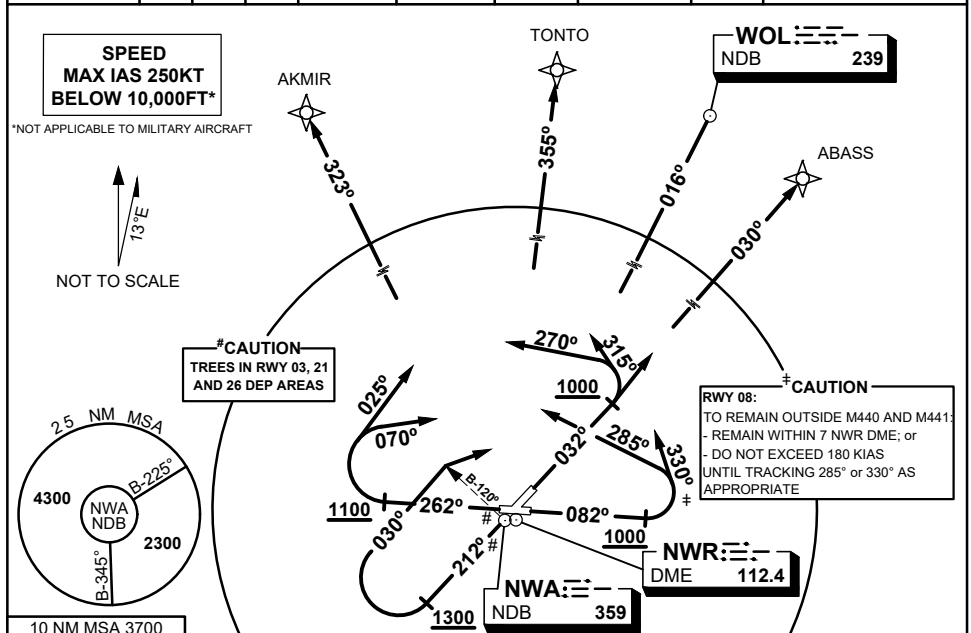


STANDARD INSTRUMENT DEPARTURES (SID) RWYS NORTH NOWRA, NSW (YSNW)

04 SEP 2025

ATIS/AWIS(AH)	AFIS	ACD	SMC	TWR	APP	CTAF + AFRU (AH)	FIA	PAL+AA	Bearings are Magnetic
125.65 280.4 359	118.85	128.35	135.85	118.85 267.2	123.5 352.15	118.85	ML CEN 121.2	122.2	Elevations in FEET AMSL



AKMIR THREE ALPHA DEPARTURE TONTO FIVE ALPHA DEPARTURE

RWY 03

- GRAD 4.8% to 2600FT then 3.3% (EXC ABASS)
- Track 032°
- AT 1000FT, but not before DER:

FOR ABASS

- GRAD 3.3%
- Intercept route as cleared

FOR WOL & TONTO

- TURN LEFT, TRACK 315°
- Intercept route as cleared

FOR AKMIR

- TURN LEFT, TRACK 270°
- Intercept route as cleared

RWY 08[‡]

- GRAD 3.8% TO 2600FT then 3.3%
- TRACK 082°
- AT 1000FT, but not before DER:

FOR ABASS & WOL

- TURN LEFT, TRACK 330°
- Intercept route as cleared

FOR TONTO & AKMIR

- TURN LEFT, TRACK 285°
- Intercept route as cleared

WOLLONGONG (WOL) FIVE ALPHA DEPARTURE ABASS FIVE ALPHA DEPARTURE

RWY 21[#]

- GRAD 4.3% to 1300FT then 3.3%
- Track 212°
- AT 1300FT, but not before DER, TURN RIGHT, TRACK 030°:

FOR AKMIR & TONTO

- Intercept route as cleared

FOR WOL & ABASS

- After passing NWA B-120, TURN RIGHT
- Intercept route as cleared

RWY 26[#]

- GRAD 4.7% TO 1300FT then 3.3%
- TRACK 262°
- AT 1100FT, but not before DER, TURN RIGHT:

FOR AKMIR & TONTO

- TRACK 025°
- Intercept route as cleared

FOR WOL & ABASS

- TRACK 070°
- Intercept route as cleared

Changes: FROM SUP H76/25, SID DESIGNATORS

SNWDP03-184

