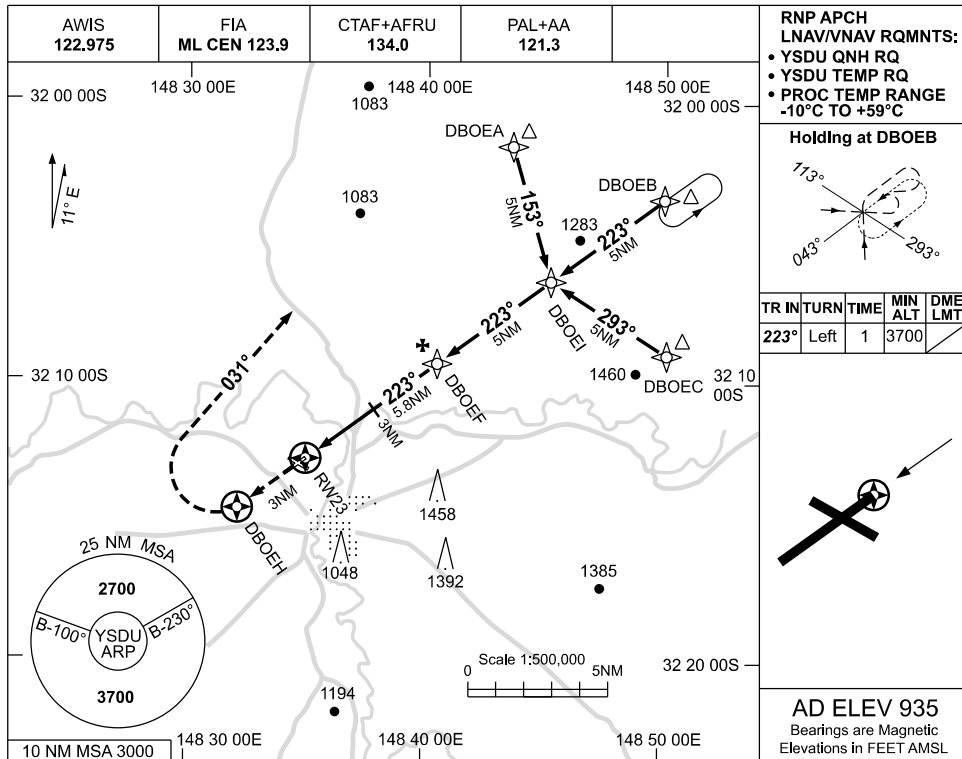


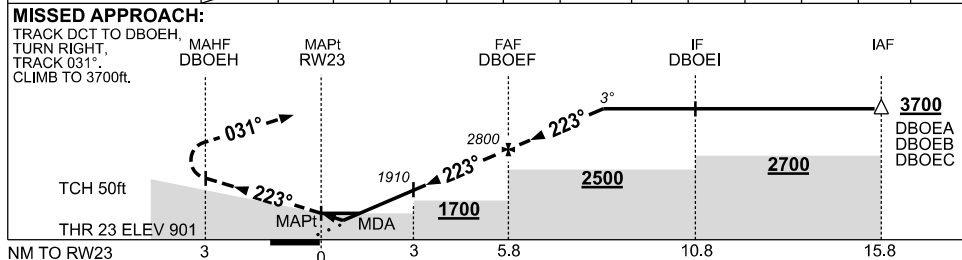
USE QNH

RNP RWY 23
DUBBO, NSW (YSDU)

09 JUL 2026



NM TO NEXT WPT	RW23	1	1.7	2	3	4	DBOEF	1	2	2.8		
ALT (3° APCH PATH)		1280	1500	1590	1910	2230	2800	3110	3430	3700		



NOTES

1. MAX IAS:
 INITIAL : 210KT.

CATEGORY	A	B	C	D
LNAV/VNAV		1280 (379-2.1)		
LNAV		1500 (599-3.4)		
CIRCLING	1730 (795-2.4)		1880 (945-4.0)	1990 (1055-5.0)
ALTERNATE	(1295-4.4)		(1445-6.0)	(1555-7.0)

Changes: PAL+AA, Editorial.

SDUGN02-187