

**STANDARD INSTRUMENT ARRIVAL (STAR)
PRAWN ONE ARRIVAL (RNAV)
CAMDEN, NSW (YSCN)**

09 JUL 2026

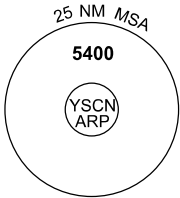
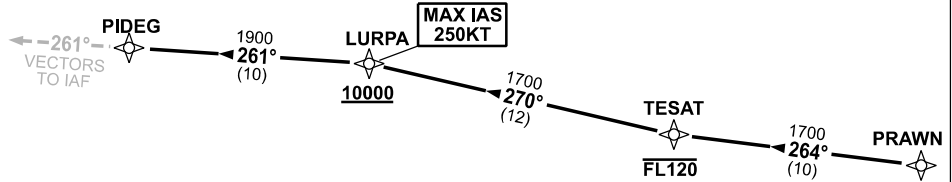
ATIS/AWIS (AH) 125.1	APP/DEP 124.4 118.4	TWR 120.1	SMC 121.9	FIA SY CEN 124.55	CTAF+AFRU (AH) 120.1	PAL 120.6	Bearings are Magnetic Elevation in FEET AMSL
--------------------------------	-------------------------------	---------------------	---------------------	-----------------------------	--------------------------------	---------------------	---

NOT TO SCALE



**SPEED
MAX IAS 250KT
BELOW 10,000ft**

RNP 1



10 NM MSA 3400

ARRIVAL: PRAWN ONE

- From PRAWN, track 264° to TESAT
Cross TESAT AT or BLW FL120
- Turn RIGHT, track 270° to LURPA
Cross LURPA AT or ABV 10000ft
MAX IAS 250KT from LURPA
- Turn LEFT track 261° to PIDEG
- Track 261°, EXPECT radar vectors to IAF

**COMMUNICATIONS FAILURE: PROCEDURE IN IMC
IF ABLE CTC SY APP +61 2 9556 6515**

- Squawk 7600, comply with vertical navigation requirements, but not below MSA.
- Track via the latest STAR clearance to the nominated runway, then fly the most suitable approach in accordance with ERS A EMERG Section 1.5.

Changes: NEW PROCEDURE.

SCNSR02-187