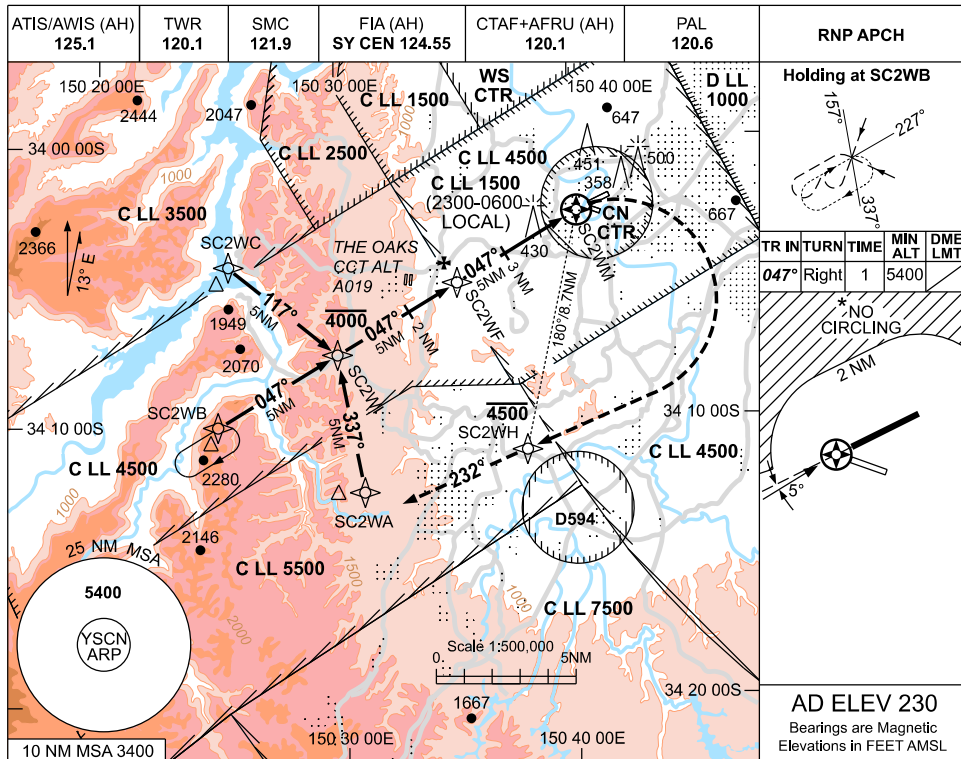


USE QNH

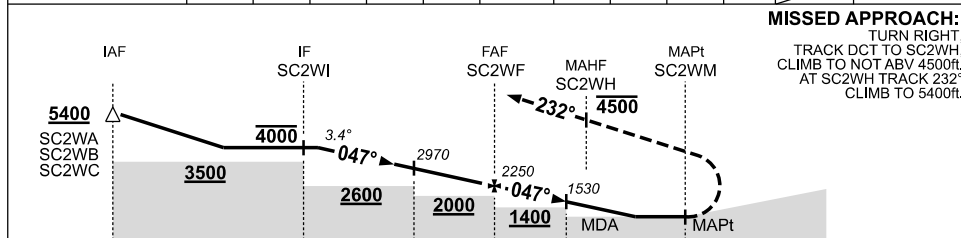
RNP W

09 JUL 2026

CAMDEN, NSW (YSCN)



NM TO NEXT WPT	4.8	4	3	2	1	SC2WF	4	3	2.8	1.7	SC2WM
ALT (3.4° APCH PATH)	4000	3700	3340	2970	2610	2250	1890	1530	1480	1060	



NM TO SC2WM

NOTES

- MAX IAS:
INITIAL : 210KT.
MAP TURN : 195KT.
- NO CIRCLING NORTH OF RWY 06 / 24 BEYOND 2NM.
- ACFT TO CALL CN TWR PRIOR TO SC2WI.
- TRAINING RESTR: SEE ERSA.
- COLOUR: SEE SPEC NOTICES.

CATEGORY	A	B	C	D
CIRCLING *	1060 (830-2.4)	1480 (1250-4.0)		NOT APPLICABLE
ALTERNATE	(1330-4.4)	(1750-6.0)		

Changes: REVISED PROC, Editorial.

SCNGN01-187