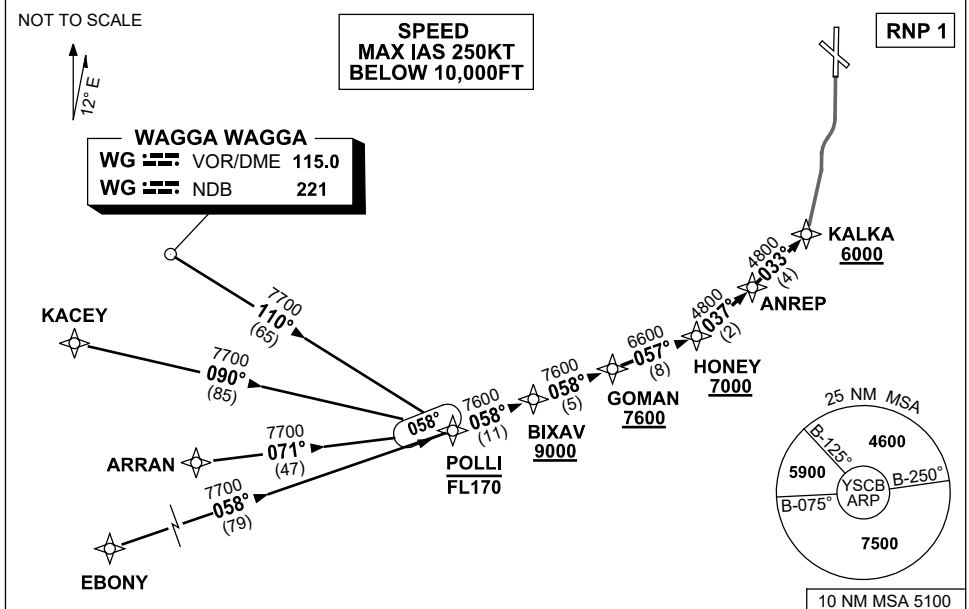


**STANDARD ARRIVAL ROUTE (STAR)
POLLI NINE X-RAY ARRIVAL (RNAV)
CANBERRA, ACT (YSCB)**

7 SEP 2023

ATIS 116.7 127.45 263	AWIS (AH) 116.7	APP 124.5	TWR 118.7	SMC/ACD 121.7	FIA (AH) ML CEN 125.9	CTAF+AFRU (AH) AFRU+PAL (AH) 118.7	Bearings are Magnetic Elevations in FEET AMSL
--------------------------	--------------------	--------------	--------------	------------------	--------------------------	--	--



TRANSITIONS:

WAGGA: From WG VOR or NDB to POLLI:
(WG)

- Track 110° to POLLI
- Then follow ARRIVAL instructions

KACEY: From KACEY to POLLI:

- Track 090° to POLLI
- Then follow ARRIVAL instructions

ARRAN: From ARRAN to POLLI:

- Track 071° to POLLI
- Then follow ARRIVAL instructions

EBONY: From EBONY to POLLI:

- Track 058° to POLLI
- Then follow ARRIVAL instructions

ARRIVAL: **POLLI NINE**

- RWY 35 X-RAY:**
- **Cross** POLLI AT or BLW FL170
 - From POLLI track 058° to BIXAV
 - **Cross** BIXAV AT or ABV 9000ft
 - Track 058° TO GOMAN
 - **Cross** GOMAN AT or ABV 7600ft
 - Turn LEFT, track 057° TO HONEY
 - **Cross** HONEY AT or ABV 7000ft
 - Turn LEFT, track 037° TO ANREP
 - Turn LEFT, track 033° TO KALKA
 - **Cross** KALKA AT or ABV 6000ft
 - Track via RNP X RWY 35 (AR)

COMMUNICATIONS FAILURE: PROCEDURE IN IMC

- Squawk 7600, comply with vertical navigation requirements, but not below MSA.
- Track via the latest STAR clearance to the nominated runway, then fly the most suitable approach in accordance with ERSA EMERG Section 1.5.

Changes: REVISED PROC.

SCBSR07-176