

**STANDARD ARRIVAL ROUTE (STAR)  
LEECE ONE ALPHA ARRIVAL (JET) (RNAV)  
CANBERRA, ACT (YSCB)**

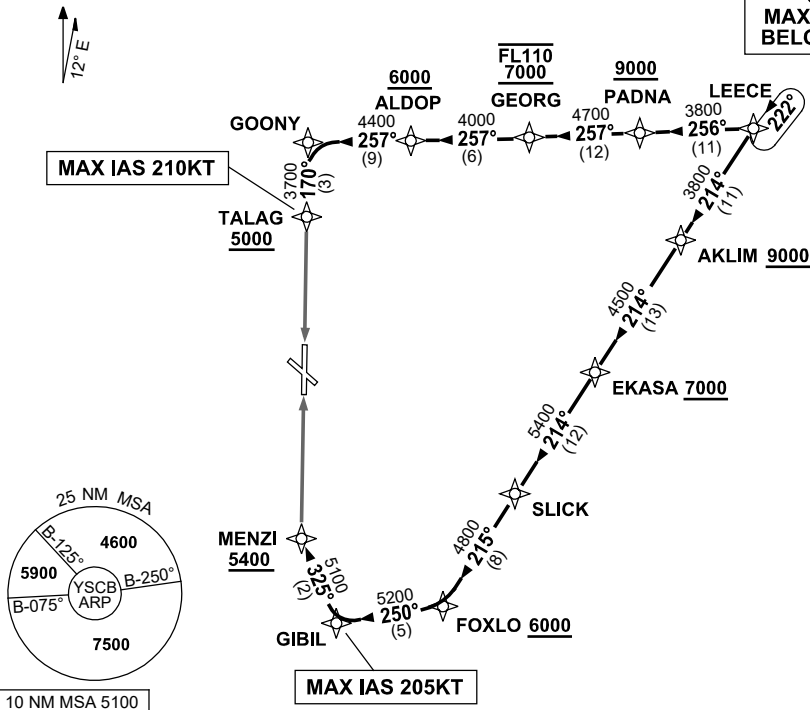
**13 JUN 2024**

ATIS 116.7 127.45 263	AWIS (AH) 116.7	APP 124.5	TWR 118.7	SMC/ACD 121.7	FIA (AH) ML CEN 125.9	CTAF+AFRU (AH) AFRU+PAL (AH) 118.7	Bearings are Magnetic Elevations in FEET AMSL
--------------------------	--------------------	--------------	--------------	------------------	--------------------------	--	--

NOT TO SCALE

**SPEED  
MAX IAS 250KT  
BELOW 10,000ft**

**RNP 1**



**ARRIVAL: LEECE ONE**

**RWY 17 ALPHA:**

- From LEECE track 256° to PADNA  
**Cross** PADNA AT or ABV 9000ft
- Turn RIGHT, track 257° to GEORG  
**Cross** GEORG BTN 7000ft and FL110
- Track 257° to ALDOP  
**Cross** ALDOP AT or ABV 6000ft
- Track 257° to GOONY
- Turn LEFT, track 170° to TALAG  
**Cross** TALAG AT or ABV 5000ft  
**MAX IAS 210KT** from TALAG
- Track via RNP W RWY 17 (AR) or VOR RWY 17 approach

**RWY 35 ALPHA:**

- From LEECE track 214° to AKLIM  
**Cross** AKLIM AT or ABV 9000ft
- Track 214° to EKASA  
**Cross** EKASA AT or ABV 7000ft
- Track 214° to SLICK
- Turn RIGHT, track 215° to FOXLO  
**Cross** FOXLO AT or ABV 6000ft
- Turn RIGHT, track 250° to GIBIL  
**MAX IAS 205KT** from GIBIL
- Turn RIGHT, track 325° to MENZI  
**Cross** MENZI AT or ABV 5400ft
- Track via ILS, RNP Z, LOC or VOR RWY 35 approach.

**COMMUNICATIONS FAILURE: PROCEDURE IN IMC**

- Squawk 7600, comply with vertical navigation requirements, but not below MSA.
- Track via the latest STAR clearance to the nominated runway, then fly the most suitable approach in accordance with ERSA EMERG Section 1.5.

Changes: WPT RAZZI RENAMED LEECE, PROC NAME, VALIDITY INDICATOR.

SCBSR04-179