

**STANDARD INSTRUMENT DEPARTURES (SID)  
IDROP ONE (NON-JET) (RNAV)  
CANBERRA, ACT (YSCB)**

**09 JUL 2026**

ATIS 116.7 127.45 263	AWIS (AH) 116.7	SMC/ACD 121.7	TWR 118.7	DEP 124.5	FIA (AH) ML CEN 125.9	CTAF+AFRU (AH) AFRU+PAL (AH) 118.7	BRG are MAG ELEV in FT AMSL
--------------------------	--------------------	------------------	--------------	--------------	--------------------------	--	--------------------------------

NOT TO SCALE

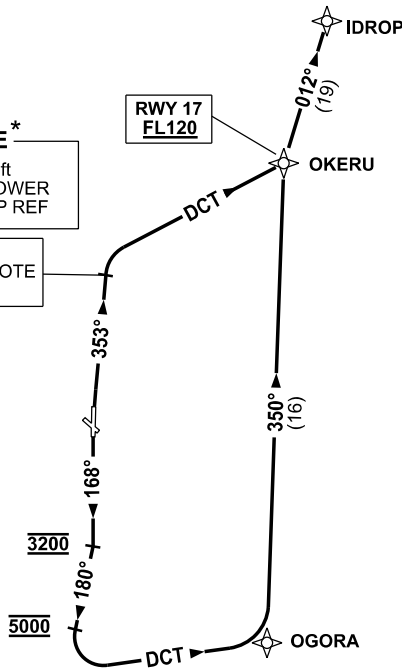
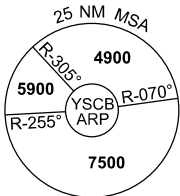


**SPEED  
MAX IAS 250KT  
BELOW 10,000ft**

**RNP 1**

**NOTE \***  
AT 5000ft  
OUTSIDE TOWER  
HOURS-NAP REF

**3400** \*SEE NOTE  
**5000**



10 NM MSA 5100

**IDROP ONE DEPARTURE**

**RWY 35**

- GRAD 6.8% to 3400ft then 3.3%
- NOT BEFORE DER turn RIGHT track 353°
- AT 3400ft  
(5000ft - See NOTE \*)  
turn RIGHT track DCT to OKERU
- Turn LEFT track 012° to IDROP,  
then as cleared

**RWY 17**

- GRAD 4.9% to 4800ft then 3.3%
- Track 168°
- AT 3200ft turn RIGHT track 180°
- AT 5000ft turn LEFT,  
track DCT to OGORA
- Turn LEFT track 350° to OKERU  
**Cross** OKERU AT or ABV FL120
- Turn RIGHT track 012° to IDROP,  
then as cleared