

**STANDARD INSTRUMENT DEPARTURES (SID)
AKMIR THREE (NON-JET) (RNAV)
CANBERRA, ACT (YSCB)**

30 NOV 2023

ATIS 116.7 127.45 263	AWIS (AH) 116.7	SMC/ACD 121.7	TWR 118.7	DEP 124.5	FIA (AH) ML CEN 125.9	CTAF+AFRU (AH) AFRU+PAL (AH) 118.7	BRG are MAG ELEV in FT AMSL
--------------------------	--------------------	------------------	--------------	--------------	--------------------------	--	--------------------------------

NOT TO SCALE



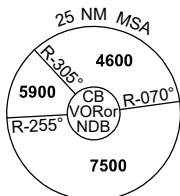
NOTE *

AT 5000ft
OUTSIDE TOWER
HOURS-NAP REF

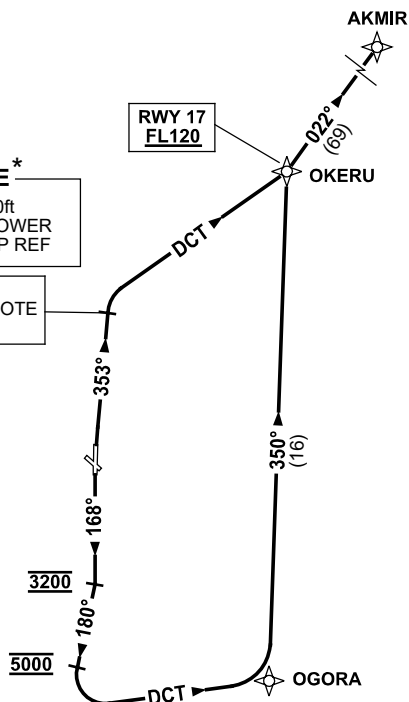
3400 *SEE NOTE
5000

**SPEED
MAX IAS 250KT
BELOW 10,000ft**

RNP 1



10 NM MSA 5100



AKMIR THREE DEPARTURE

RWY 35

- GRAD 6.8° to 3400ft thence 3.3°
- NOT BEFORE DER turn RIGHT, track 353°
- AT 3400ft
(5000ft - See NOTE *) turn
RIGHT, track DCT to OKERU
- Turn LEFT, track 022° to AKMIR,
thence as cleared

RWY 17

- GRAD 4.9° to 4800ft thence 3.3°
- Track 168°
- AT 3200ft turn RIGHT, track 180°
- AT 5000ft turn LEFT,
track DCT to OGORA
- Turn LEFT, track 350° to OKERU
Cross OKERU AT or ABV FL120
- Turn RIGHT, track 022° to AKMIR,
thence as cleared

Changes: RWY 35 GRAD, RNP SPEC, Editorial.

SCBDP07-177