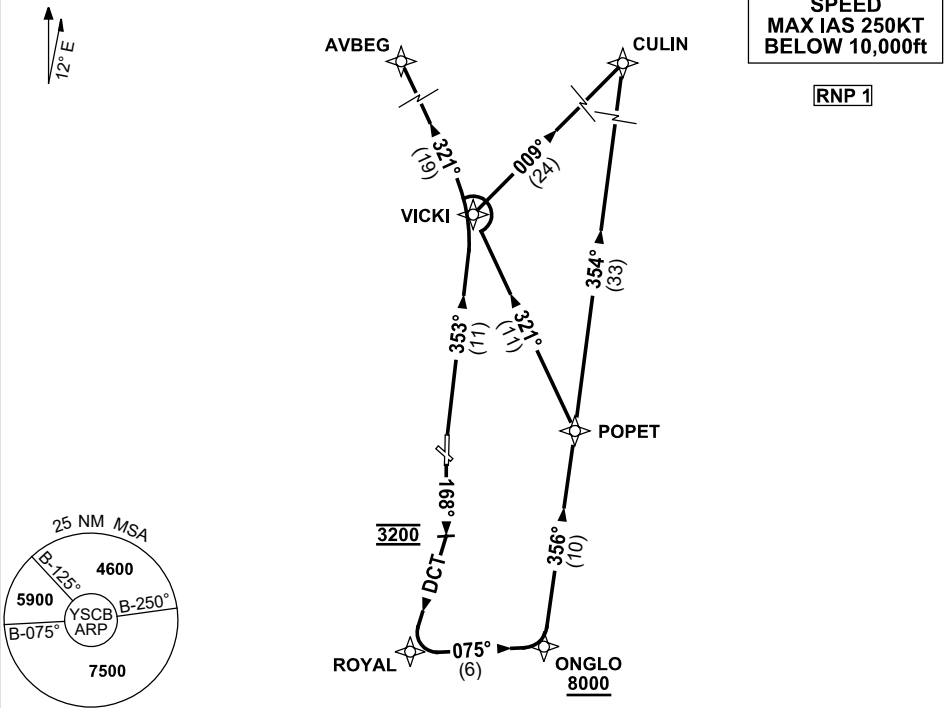


STANDARD INSTRUMENT DEPARTURES (SID)
RWY 17/35 NORTH (JET) (RNAV)
CANBERRA, ACT (YSCB)

21 MAR 2024

| | | | | | | | |
|--------------------------|--------------------|------------------|--------------|--|--------------------------|--|--------------------------------|
| ATIS 116.7 127.45 263 | AWIS (AH) 116.7 | SMC/ACD 121.7 | TWR 118.7 | DEP RWY 17 DEP RWY 35 CULIN 124.5 DEP RWY 35 AVBEG 125.9 | FIA (AH) ML CEN 125.9 | CTAF+AFRU (AH) AFRU+PAL (AH) 118.7 | BRG are MAG ELEV in FT AMSL |
|--------------------------|--------------------|------------------|--------------|--|--------------------------|--|--------------------------------|

NOT TO SCALE



10 NM MSA 5100

AVBEG **THREE** **DEPARTURE (RNAV)**
CULIN **TWO** **DEPARTURE (RNAV)**

RWY 35

- GRAD 6.8% to 3400ft thence 3.3%
- NOT BEFORE DER turn RIGHT
- Track 353° to VICKI

From VICKI

For AVBEG

- Turn LEFT, track 321° to AVBEG
thence as cleared

For CULIN

- Turn RIGHT, track 009° to CULIN,
thence as cleared

RWY 17

- GRAD 4.9% to 4800ft thence 3.3%
- Track 168°
- AT 3200ft turn RIGHT
- Track DCT to ROYAL (approx 180°)
- Turn LEFT, track 075° to ONGLO
- **Cross** ONGLO AT or ABV 8000ft
- Turn LEFT, track 356° to POPET

From POPET

For AVBEG

- Turn LEFT, track 321° to AVBEG,
thence as cleared

For CULIN

- Turn LEFT, track 354° to CULIN,
thence as cleared

Changes: Editorial.

SCBDP05-178