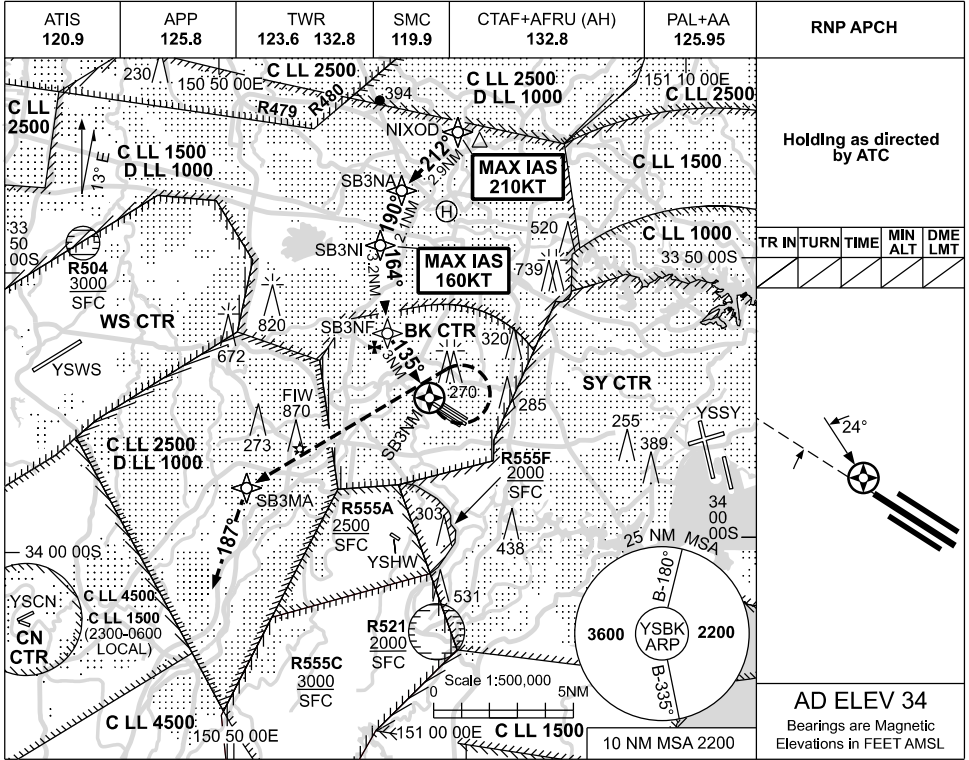


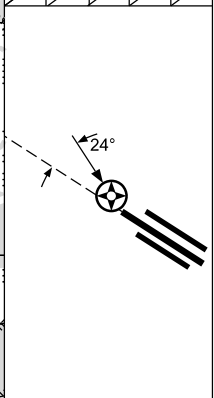
09 JUL 2026

**SYDNEY/BANKSTOWN, NSW (YSBK)**

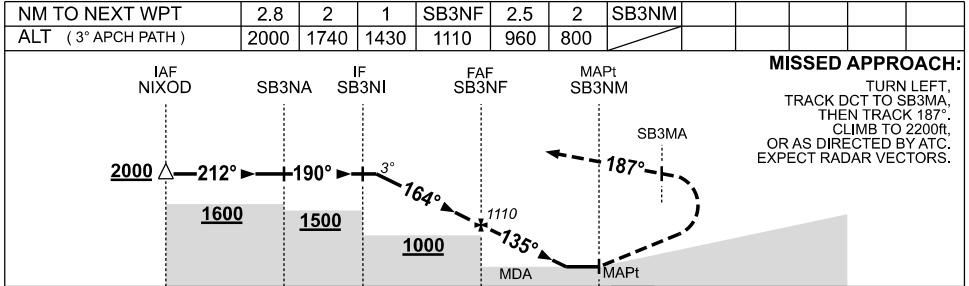


**Holding as directed by ATC**

TR	IN	TURN	TIME	MIN ALT	DME LMT



**AD ELEV 34**  
Bearings are Magnetic  
Elevations in FEET AMSL



**NOTES**

- MAX IAS:  
NIXOD : 210KT.  
SB3NI : 160KT.  
MISSED APCH TURN : 160KT.
- CAT C CIRCLING SW OF YSBK  
REQUIRES A CLEARANCE  
INTO R555A/F.

CATEGORY	A	B	C	D
				NOT APPLICABLE
CIRCLING	800 (766-2.4)		960 (926-4.0)	
ALTERNATE	(1266-4.4)		(1426-6.0)	

Changes: NEW PROCEDURE, MSA.

SBKGN02-187