

STANDARD INSTRUMENT DEPARTURES (SID) URDOS ONE DEPARTURE (RNAV) RWY 11C/29C SYDNEY/BANKSTOWN, NSW (YSBK)

09 JUL 2026

ATIS 120.9	SMC 119.9	TWR 123.6 132.8	APP 125.8	CTAF+AFRU (AH) 132.8	PAL+AA 125.95	Bearings are MAG ELEV in FT AMSL
----------------------	---------------------	---------------------------	---------------------	--------------------------------	-------------------------	-------------------------------------

NOT TO SCALE



**SPEED
MAX IAS 250KT
BELOW 10,000ft**

RNP 1

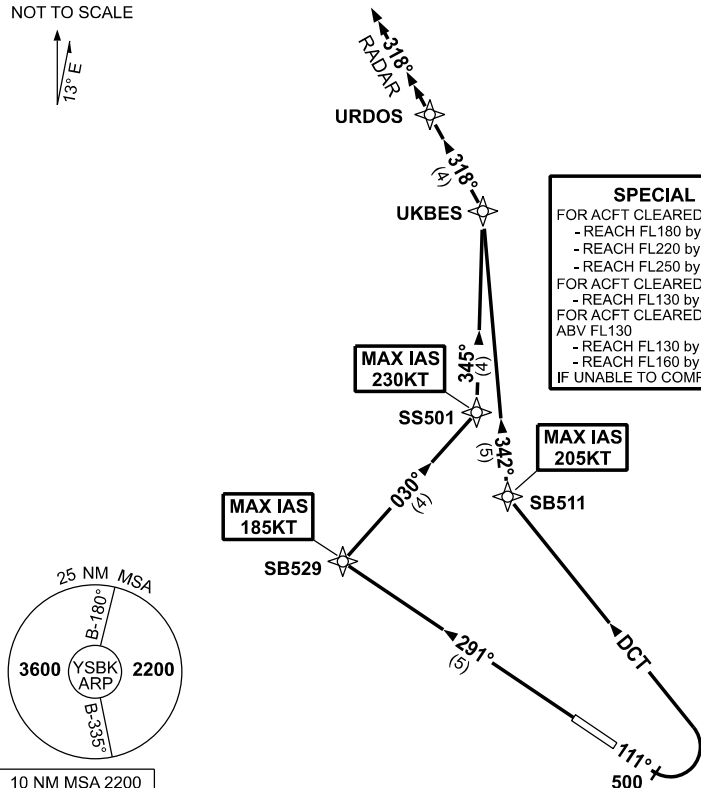
SPECIAL REQUIREMENT

FOR ACFT CLEARED VIA OLSEM-Y193-BANDA
 - REACH FL180 by 156NM BANDA
 - REACH FL220 by 144NM BANDA
 - REACH FL250 by 110NM BANDA

FOR ACFT CLEARED VIA WLM AT or ABV FL130
 - REACH FL130 by 31NM WLM NDB

FOR ACFT CLEARED VIA PUDUT-MATLA AT or ABV FL130
 - REACH FL130 by 15NM PUDUT
 - REACH FL160 by PUDUT

IF UNABLE TO COMPLY ADVISE ATC.



DEPARTURE: URDOS ONE

RWY 11C

GRAD 3.6% to 300ft then 3.3%
 MAX IAS 205KT until SB511

- Track 111°
- AT or ABV 500ft turn LEFT, track DCT to SB511
- Turn RIGHT, track 342° to UKBES

RWY 29C

GRAD 3.3%
 MAX IAS 185KT until SB529

- Track 291° to SB529
- MAX IAS 230KT until SS501
- Turn RIGHT, track 030° to SS501
- Turn LEFT, track 345° to UKBES

URDOS ONE

- From UKBES, track 318° to URDOS
- From URDOS, continue tracking 318°
- Expect radar vectors to cleared route.
- Contact Departures when advised by Tower, or approaching controlled airspace.

Changes: NEW PROCEDURE.

SBKDP03-187