

**STANDARD INSTRUMENT DEPARTURES (SID)
MECKO ONE DEPARTURE (RNAV) RWY 11C/29C
SYDNEY/BANKSTOWN, NSW (YSBK)**

09 JUL 2026

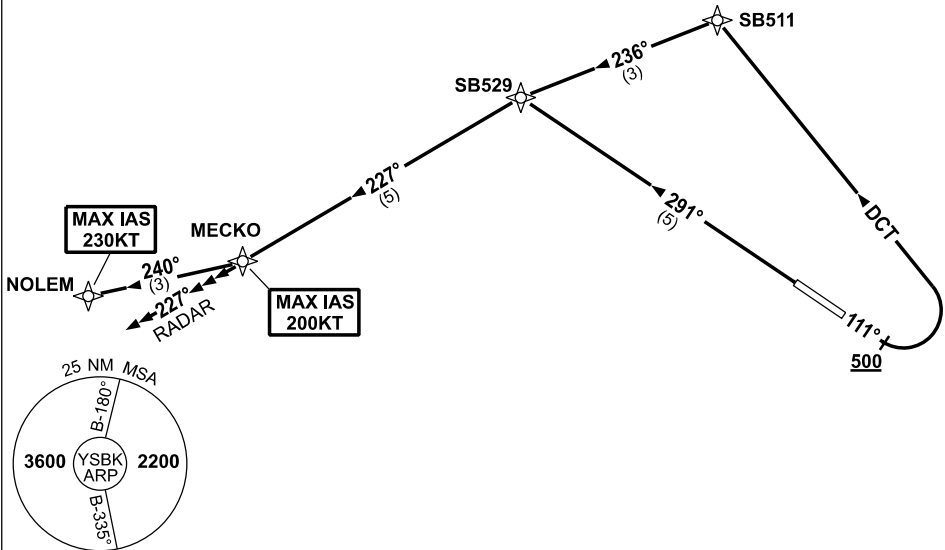
ATIS 120.9	SMC 119.9	TWR 123.6 132.8	APP 125.8	CTAF+AFRU (AH) 132.8	PAL+AA 125.95	Bearings are MAG ELEV in FT AMSL
---------------	--------------	--------------------	--------------	-------------------------	------------------	-------------------------------------

NOT TO SCALE



**SPEED
MAX IAS 250KT
BELOW 10,000ft**

RNP 1



10 NM MSA 2200

DEPARTURE: MECKO ONE

RWY 11C

GRAD 3.6% to 300ft, then 3.3%
MAX IAS 200KT until MECKO

- Track 111°
- AT or ABV 500ft turn LEFT, track DCT to SB511
- Turn LEFT, track 236° to SB529
- Turn LEFT, track 227° to MECKO
- Contact Departures when advised by Tower, or approaching controlled airspace.

RWY 29C

GRAD 3.3%
MAX IAS 200KT until MECKO

- Track 291° to SB529
- Turn LEFT, track 227° to MECKO
- Contact Departures when advised by Tower, or approaching controlled airspace.

TRANSITIONS:

NOLEM

MAX IAS 230KT until NOLEM

- From MECKO, turn RIGHT track 240° to NOLEM, then as cleared.

RADAR

- From MECKO, continue tracking 227°
- Expect radar vectors to cleared route.

Changes: NEW PROCEDURE.

SBKDP02-187