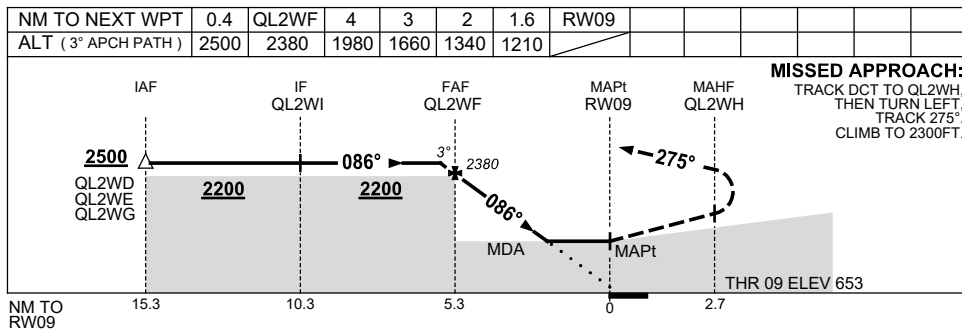
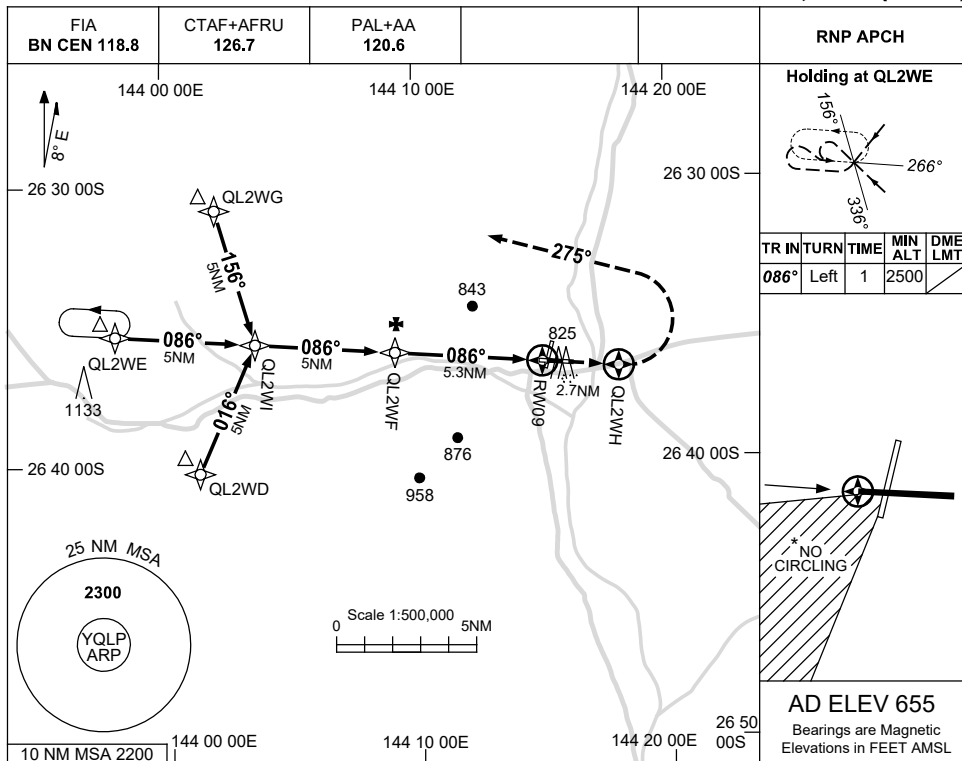


USE QNH

RNP RWY 09  
**QUILPIE, QLD (YQLP)**

1 DEC 2022



**NOTES**

CATEGORY	A	B	C	D
LNAV	1210 (555-3.1)			NOT APPLICABLE
CIRCLING *	1250 (595-2.4)		1480 (825-4.0)	
ALTERNATE	(1095-4.4)		(1325-6.0)	

- MAX IAS:  
INITIAL : 230KT.
- NO CIRCLING SOUTH WEST OF RWY 18/36 & 09/27.

Changes: 1133FT MAST, 825FT MAST, WPT NAMING CONVENTION.

QLPGN01-173