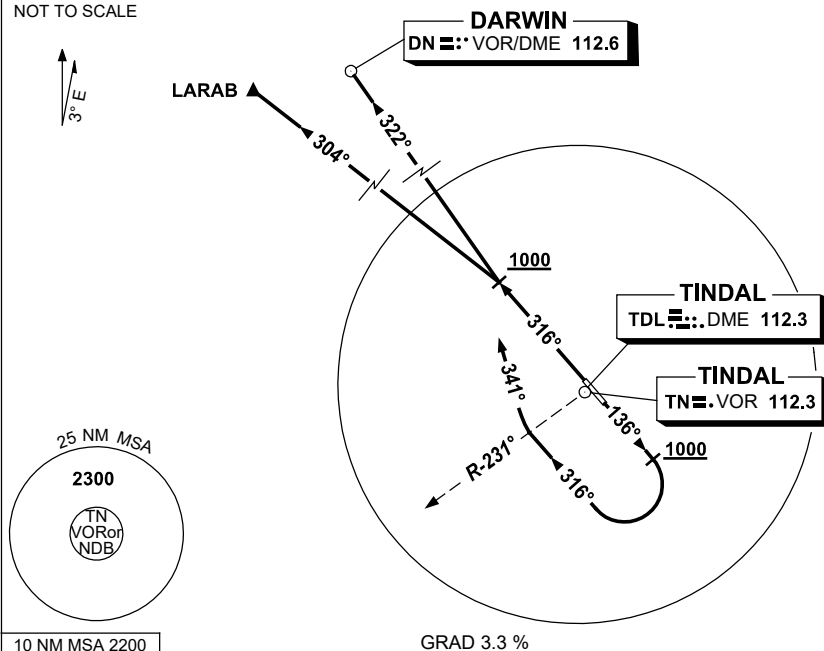


STANDARD INSTRUMENT DEPARTURES (SID) DEPARTURES - RWYS NORTH TINDAL, NT (YPTN)

30 NOV 2023

ATIS 112.3 124.0 316.3	TWR 119.7 257.3	APP 120.95 261.4	SMC 135.85 264.3	FIA (AH) BN CEN 122.6	CTAF+AFRU (AH) AFIS 119.7	Bearings are Magnetic Elevations in FEET AMSL
---------------------------	--------------------	---------------------	---------------------	--------------------------	---------------------------------	--

NOT TO SCALE



LARAB FOUR DEPARTURE DARWIN (DN) FOUR DEPARTURE

RWY 14

- Track 136°
- AT 1000ft BUT NOT BEFORE DER

For LARAB & DN

- Turn RIGHT, track 316°
- After crossing TN R-231° turn RIGHT
- Track 341°
- Intercept cleared route

RWY 32

- Track 316°
- AT 1000ft BUT NOT BEFORE DER

For LARAB

- Turn LEFT, track 304° for LARAB, thence as cleared

For DN

- Turn RIGHT, track 322° for DN, thence as cleared

COMMUNICATIONS FAILURE PROCEDURE

On recognition of Communications Failure:

- Squawk 7600
- Maintain last assigned vector for two minutes, and
- CLIMB IF NECESSARY TO MINIMUM SAFE ALTITUDE to maintain terrain clearance, then
- Proceed in accordance with the latest ATC route clearance acknowledged

Changes: AFIS, Editorial.

PTNDP02-177