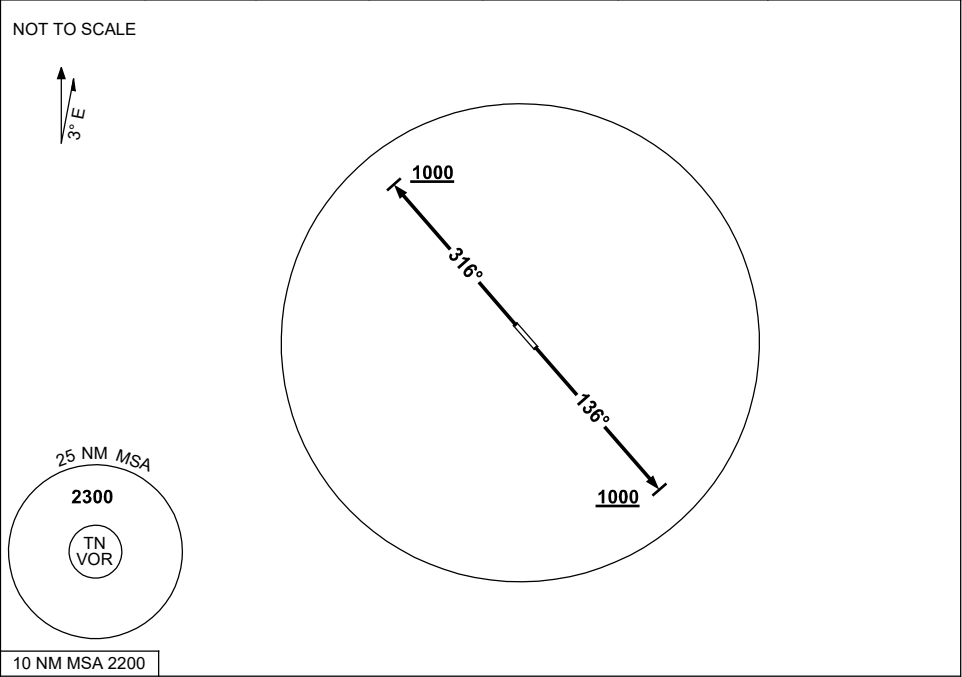


STANDARD INSTRUMENT DEPARTURES (SID)
TINDAL THREE DEPARTURE (RADAR)
TINDAL, NT (YPTN)

30 NOV 2023

ATIS 112.3 124.0 316.3	TWR 119.7 257.3	APP 120.95 261.4	SMC 135.85 264.3	FIA (AH) BN CEN 122.6	CTAF+AFRU (AH) AFIS 119.7	Bearings are Magnetic Elevations in FEET AMSL
---------------------------	--------------------	---------------------	---------------------	--------------------------	---------------------------------	--



TINDAL THREE DEPARTURE (RADAR) RWY 14 <ul style="list-style-type: none">• GRAD 3.3%• Track 136°• AT 1000ft but not before DER turn to assigned heading or track	RWY 32 <ul style="list-style-type: none">• GRAD 3.3%• Track 316°• AT 1000ft but not before DER turn to assigned heading or track
--	---

COMMUNICATIONS FAILURE PROCEDURE On recognition of Communications Failure: <ul style="list-style-type: none">• Squawk 7600• Maintain last assigned vector for two minutes, and• CLIMB IF NECESSARY TO MINIMUM SAFE ALTITUDE to maintain terrain clearance, then• Proceed in accordance with the latest ATC route clearance acknowledged
--

Changes: AFIS, Editorial.

PTNDP01-177