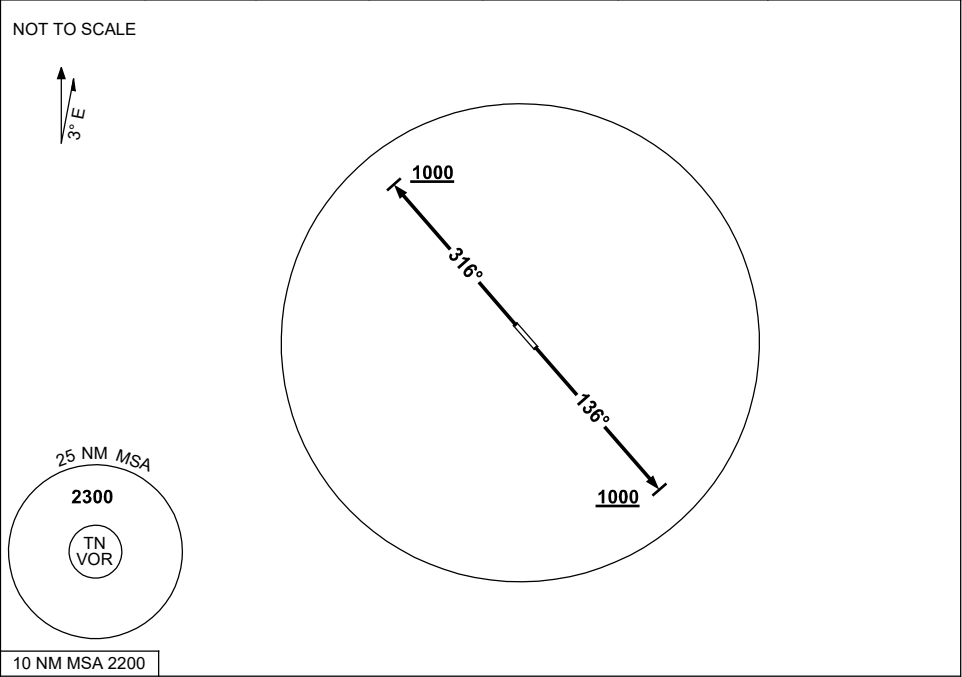


STANDARD INSTRUMENT DEPARTURES (SID)  
TINDAL THREE DEPARTURE (RADAR)  
**TINDAL, NT (YPTN)**

30 NOV 2023

ATIS 112.3 124.0 316.3	TWR 119.7 257.3	APP 120.95 261.4	SMC 135.85 264.3	FIA (AH) BN CEN 122.6	CTAF+AFRU (AH) AFIS 119.7	Bearings are Magnetic Elevations in FEET AMSL
---------------------------	--------------------	---------------------	---------------------	--------------------------	---------------------------------	--



<b>TINDAL THREE DEPARTURE (RADAR)</b> <b>RWY 14</b> <ul style="list-style-type: none"><li>• GRAD 3.3%</li><li>• Track 136°</li><li>• AT 1000ft but not before DER turn to assigned heading or track</li></ul>	<b>RWY 32</b> <ul style="list-style-type: none"><li>• GRAD 3.3%</li><li>• Track 316°</li><li>• AT 1000ft but not before DER turn to assigned heading or track</li></ul>
--	---

<b>COMMUNICATIONS FAILURE PROCEDURE</b> On recognition of Communications Failure: <ul style="list-style-type: none"><li>• Squawk 7600</li><li>• Maintain last assigned vector for two minutes, and</li><li>• CLIMB IF NECESSARY TO MINIMUM SAFE ALTITUDE to maintain terrain clearance, then</li><li>• Proceed in accordance with the latest ATC route clearance acknowledged</li></ul>
--

Changes: AFIS, Editorial.

PTNDP01-177