

**STANDARD INSTRUMENT ARRIVAL (STAR)
LAVEX THREE ALPHA ARRIVALS (NON-JET) (RNAV) RWY 21/24
PERTH, WA (YPPH)**

09 JUL 2026

ATIS 113.7 123.8	APP 123.6	TWR 127.4	SMC E of RWY 03/21 122.2 W of RWY 03/21 121.7	Bearings are Magnetic Elevations in FEET AMSL
---------------------	--------------	--------------	---	--

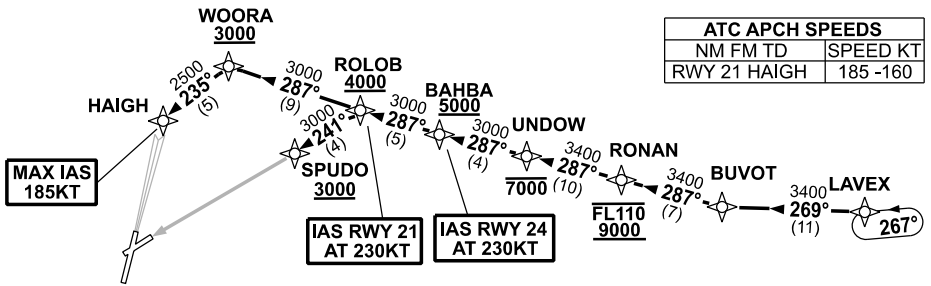
NOT TO SCALE



RNP1

**SPEED
MAX IAS 250KT
BELOW 10,000ft**

ATC APCH SPEEDS	
NM FM TD	SPEED KT
RWY 21 HAIGH	185 -160



LAVEX THREE ALPHA ARRIVALS

RWY 21:

- From LAVEX track 269° to BUVOT
- Turn RIGHT track 287° to RONAN
Cross RONAN BTN 9000ft and FL110
- Track 287° to UNDOU
Cross UNDOU AT or BLW 7000ft
- Track 287° to BAHBA
Cross BAHBA AT or ABV 5000ft
- Track 287° to ROLOB
Cross ROLOB AT or ABV 4000ft
IAS AT 230KT from ROLOB
- Track 287° to WOORA
Cross WOORA AT or ABV 3000ft
- Turn LEFT, track 235° to HAIGH
for ILS, RNP or
LOC RWY 21 APPROACH
MAX IAS 185KT from HAIGH

RWY 24:

- From LAVEX track 269° to BUVOT
- Turn RIGHT track 287° to RONAN
Cross RONAN BTN 9000ft and FL110
- Track 287° to UNDOU
Cross UNDOU AT or BLW 7000ft
- Track 287° to BAHBA
Cross BAHBA AT or ABV 5000ft
IAS AT 230KT from BAHBA
- Track 287° to ROLOB
Cross ROLOB AT or ABV 4000ft
- Turn LEFT track 241° to SPUDO
for RNP RWY 24 APPROACH
Cross SPUDO AT or ABV 3000ft

COMMUNICATIONS FAILURE: PROCEDURE IN IMC

- Squawk 7600, comply with vertical navigation requirements, but not below MSA.
- Track via the latest STAR clearance to the nominated runway, then fly the most suitable approach in accordance with ERSA EMERG Section 1.5.