

**STANDARD INSTRUMENT ARRIVAL (STAR)
SAPKO FOUR ALPHA ARRIVALS (NON-JET) (RNAV) RWY 21/24
PERTH, WA (YPPH)**

09 JUL 2026

ATIS 113.7 123.8	APP 123.6 132.95	TWR 127.4	SMC E of RWY 03/21 122.2 W of RWY 03/21 121.7	Bearings are Magnetic Elevations in FEET AMSL
---------------------	---------------------	--------------	---	--

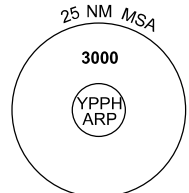
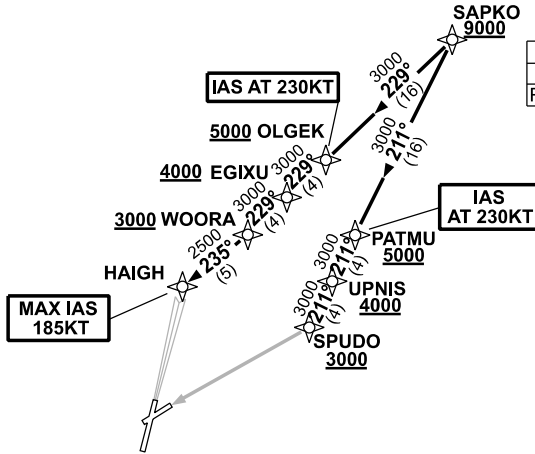
NOT TO SCALE



**SPEED
MAX IAS 250KT
BELOW 10,000ft**

RNP1

ATC APCH SPEEDS	
NM	FM TD
RWY 21	HAIGH
SPEED KT	
185 -160	



10 NM MSA 2700

SAPKO FOUR ALPHA ARRIVALS

RWY 21:

- **Cross** SAPKO AT or ABV 9000ft
- From SAPKO track 229° to OLGEK
- **Cross** OLGEK AT or ABV 5000ft
- **IAS AT 230KT** from OLGEK
- Track 229° to EGIXU
- **Cross** EGIXU AT or ABV 4000ft
- Track 229° to WOORA
- **Cross** WOORA AT or ABV 3000ft
- Turn **RIGHT** track 235° to HAIGH for ILS, RNP or LOC RWY 21 APPROACH
- **MAX IAS 185KT** from HAIGH

RWY 24:

- **Cross** SAPKO AT or ABV 9000ft
- From SAPKO track 211° to PATMU
- **Cross** PATMU AT or ABV 5000ft
- **IAS AT 230KT** from PATMU
- Track 211° to UPNIS
- **Cross** UPNIS AT or ABV 4000ft
- Track 211° to SPUDO for RNP RWY 24 APPROACH
- **Cross** SPUDO AT or ABV 3000ft

COMMUNICATIONS FAILURE: PROCEDURE IN IMC

- Squawk 7600, comply with vertical navigation requirements, but not below MSA.
- Track via the latest STAR clearance to the nominated runway, then fly the most suitable approach in accordance with ERSA EMERG Section 1.5.

Changes: FROM SUP H09/26.

PPHSR25-187