

**STANDARD INSTRUMENT ARRIVAL (STAR)  
JULIM EIGHT ALPHA ARRIVALS (JET) (RNAV) RWY 21/24  
PERTH, WA (YPPH)**

**09 JUL 2026**

ATIS 113.7 123.8	APP 123.6 132.95	TWR 127.4	SMC E of RWY 03/21 122.2 W of RWY 03/21 121.7	Bearings are Magnetic Elevations in FEET AMSL
---------------------	---------------------	--------------	---	--

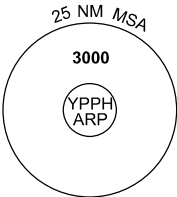
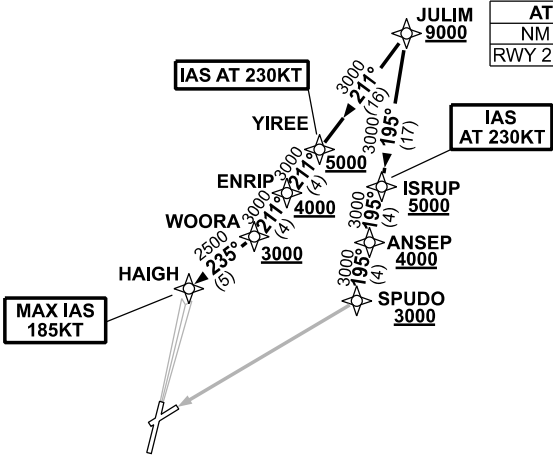
NOT TO SCALE



**SPEED  
MAX IAS 250KT  
BELOW 10,000ft**

**RNP1**

ATC APCH SPEEDS			
NM	FM	TD	SPEED KT
RWY 21	HAIGH		185-160



10 NM MSA 2700

**JULIM EIGHT ALPHA ARRIVAL**

**RWY 21:**

- **Cross** JULIM AT or ABV 9000ft
- From JULIM, track 211° to YIREE
- **Cross** YIREE AT or ABV 5000ft
- **IAS AT** 230KT from YIREE
- Track 211° to ENRIP
- **Cross** ENRIP AT or ABV 4000ft
- Track 211° to WOORA
- **Cross** WOORA AT or ABV 3000ft
- Turn RIGHT, track 235° to HAIGH for ILS, RNP or LOC RWY 21 APPROACH
- **MAX IAS** 185KT from HAIGH

**RWY 24:**

- **Cross** JULIM AT or ABV 9000ft
- From JULIM, track 195° to ISRUP
- **Cross** ISRUP AT or ABV 5000ft
- **IAS AT** 230KT from ISRUP
- Track 195° to ANSEP
- **Cross** ANSEP AT or ABV 4000ft
- Track 195° to SPUDO for RNP RWY 24 APPROACH.
- **Cross** SPUDO AT or ABV 3000ft

**COMMUNICATIONS FAILURE: PROCEDURE IN IMC**

- Squawk 7600, comply with vertical navigation requirements, but not below MSA.
- Track via the latest STAR clearance to the nominated runway, then fly the most suitable approach in accordance with ERS A EMERG Section 1.5.

Changes: FROM SUP H09/26.

PPHSR24-187