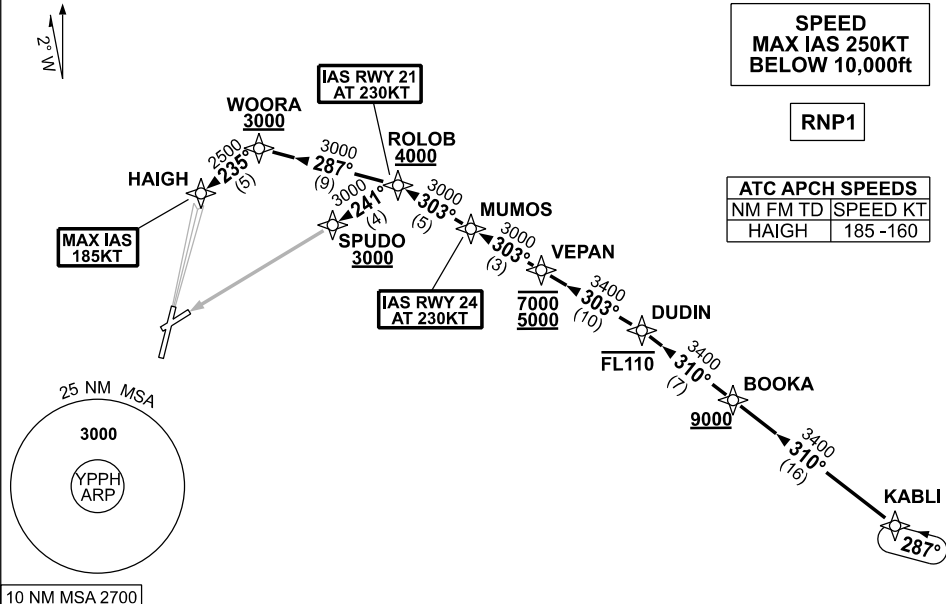


**STANDARD INSTRUMENT ARRIVAL (STAR)  
KABLI THREE ALPHA ARRIVALS (JET) (RNAV) RWY 21/24  
PERTH, WA (YPPH)**

**09 JUL 2026**

ATIS 113.7 123.8	APP 123.6	TWR 127.4	SMC E of RWY 03/21 122.2 W of RWY 03/21 121.7	Bearings are Magnetic Elevations in FEET AMSL
---------------------	--------------	--------------	---	--

NOT TO SCALE



10 NM MSA 2700

**KABLI THREE ALPHA ARRIVAL**

**RWY 21:**

- From KABLI, track 310° to BOOKA  
**Cross** BOOKA AT or ABV 9000ft
- Track 310° to DUDIN  
**Cross** DUDIN AT or BLW FL110
- Turn LEFT, track 303° to VEPAN  
**Cross** VEPAN BTN 5000ft and 7000ft
- Track 303° to MUMOS
- Track 303° to ROLOB  
**Cross** ROLOB AT or ABV 4000ft  
**IAS AT 230KT** from ROLOB
- Turn LEFT, track 287° to WOORA  
**Cross** WOORA AT or ABV 3000ft
- Turn LEFT, track 235° to HAIGH  
for ILS, RNP or  
LOC RWY 21 APPROACH  
MAX IAS 185KT from HAIGH

**RWY 24:**

- From KABLI, track 310° to BOOKA  
**Cross** BOOKA AT or ABV 9000ft
- Track 310° to DUDIN  
**Cross** DUDIN AT or BLW FL110
- Turn LEFT, track 303° to VEPAN  
**Cross** VEPAN BTN 5000ft and 7000ft
- Track 303° to MUMOS  
**IAS AT 230KT** from MUMOS
- Track 303° to ROLOB  
**Cross** ROLOB AT or ABV 4000ft
- Turn LEFT, track 241° to SPUDO  
for RNP RWY 24 APPROACH.  
**Cross** SPUDO AT or ABV 3000ft

**COMMUNICATIONS FAILURE: PROCEDURE IN IMC**

- Squawk 7600, comply with vertical navigation requirements, but not below MSA.
- Track via the latest STAR clearance to the nominated runway, then fly the most suitable approach in accordance with ERS A EMERG Section 1.5.

Changes: FROM SUP H09/26.

PPHSR23-187