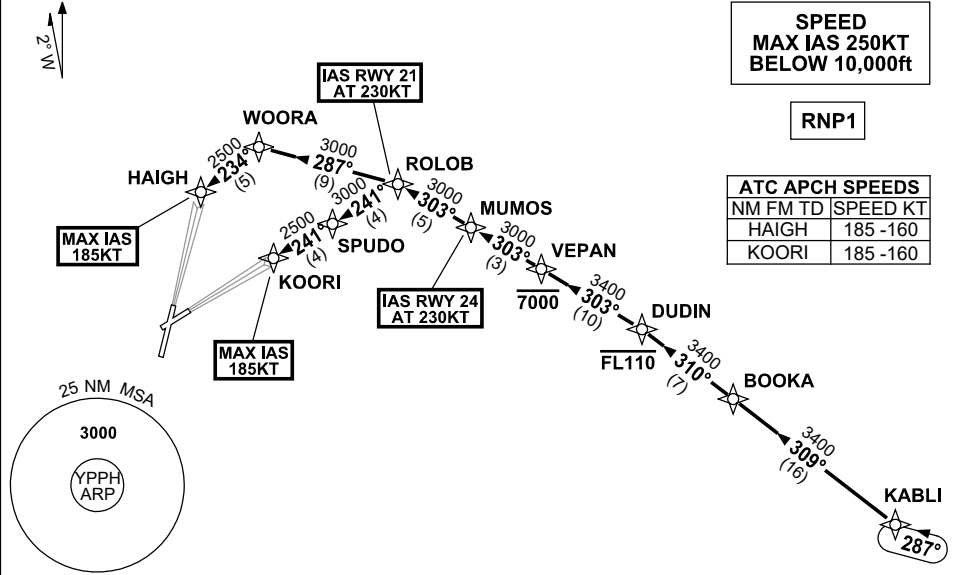


STANDARD INSTRUMENT ARRIVAL (STAR) KABLI ONE ALPHA ARRIVALS (JET) (RNAV) RWY 21/24 PERTH, WA (YPPH)

5 SEP 2024

ATIS 113.7 123.8	APP 123.6	TWR 127.4	SMC E of RWY 03/21 122.2 W of RWY 03/21 121.7	Bearings are Magnetic Elevations in FEET AMSL
---------------------	--------------	--------------	---	--

NOT TO SCALE



ARRIVAL: KABL1 ONE

RWY 21 ALPHA:

- From KABLI, track 309° to BOOKA
- Track 310° to DUDIN
- Cross** DUDIN AT or BLW FL110
- Turn LEFT, track 303° to VEPAN
- Cross** VEPAN AT or BLW 7000ft
- Track 303° to MUMOS
- Track 303° to ROLOB
- IAS AT 230KT** from ROLOB
- Turn LEFT, track 287° to WOORA
- Turn LEFT, track 234° to HAIGH
- for ILS, RNP or
- LOC RWY 21 APPROACH
- MAX IAS 185KT from HAIGH

RWY 24 ALPHA:

- From KABLI, track 309° to BOOKA
- Track 310° to DUDIN
- Cross** DUDIN AT or BLW FL110
- Turn LEFT, track 303° to VEPAN
- Cross** VEPAN AT or BLW 7000ft
- Track 303° to MUMOS
- IAS AT 230KT** from MUMOS
- Track 303° to ROLOB
- Turn LEFT, track 241° to SPUDO
- Track 241° to KOORI
- for ILS, RNP or
- LOC RWY 24 APPROACH
- MAX IAS 185KT from KOORI

COMMUNICATIONS FAILURE: PROCEDURE IN IMC

- Squawk 7600, comply with vertical navigation requirements, but not below MSA.
- Track via the latest STAR clearance to the nominated runway, then fly the most suitable approach in accordance with ERSA EMERG Section 1.5.

Changes: Editorial.

PPHSR23-180