

**STANDARD INSTRUMENT ARRIVAL (STAR)
KABLI THREE X-RAY ARRIVAL (JET) (RNAV)
PERTH, WA (YPPH)**

09 JUL 2026

ATIS 113.7 123.8	APP 123.6	TWR 127.4	SMC E of RWY 03/21 122.2 W of RWY 03/21 121.7	Bearings are Magnetic Elevations in FEET AMSL
---------------------	--------------	--------------	---	--

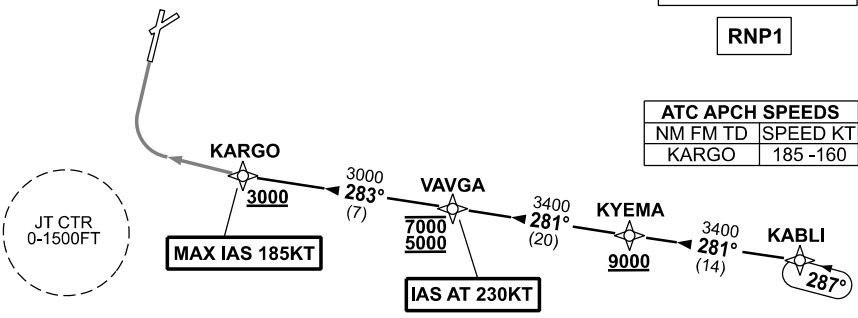
NOT TO SCALE



**SPEED
MAX IAS 250KT
BELOW 10,000ft**

RNP1

ATC APCH SPEEDS	
NM FM TD	SPEED KT
KARGO	185-160



10 NM MSA 2700

KABLI THREE ARRIVAL

- From KABLI track 281° to KYEMA
Cross KYEMA AT or ABV 9000ft
- Track 281° to VAVGA
Cross VAVGA BTN 5000ft and 7000ft
IAS AT 230KT from VAVGA
- Turn RIGHT, track 283° to KARGO
Cross KARGO AT or ABV 3000ft
MAX IAS 185KT from KARGO

RWY 03 X-RAY: • From KARGO track via RNP X RWY 03 (AR).

COMMUNICATIONS FAILURE: PROCEDURE IN IMC

- Squawk 7600, comply with vertical navigation requirements, but not below MSA.
- Track via the latest STAR clearance to the nominated runway, then fly the most suitable approach in accordance with ERSA EMERG Section 1.5.

Changes: FROM SUP H09/26.

PPHSR22-187