

**STANDARD INSTRUMENT ARRIVAL (STAR)
KABLI THREE VICTOR ARRIVAL (JET) (RNAV)
PERTH, WA (YPPH)**

09 JUL 2026

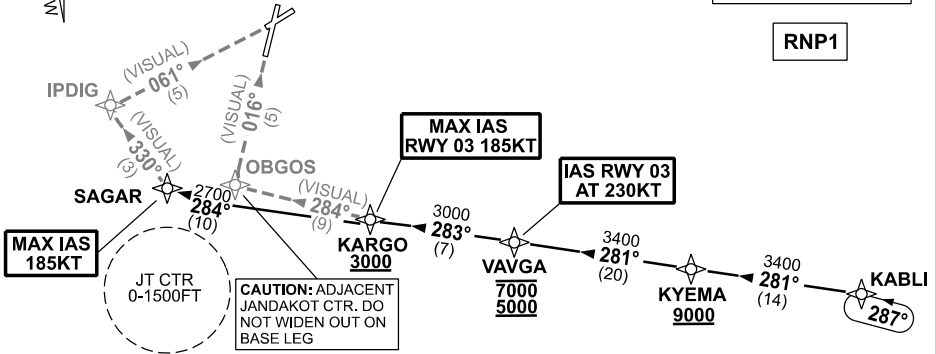
ATIS 113.7 123.8	APP 123.6	TWR 127.4	SMC E of RWY 03/21 122.2 W of RWY 03/21 121.7	Bearings are Magnetic Elevations in FEET AMSL
---------------------	--------------	--------------	---	--

NOT TO SCALE



**SPEED
MAX IAS 250KT
BELOW 10,000ft**

RNP1



ATC APCH SPEEDS	
NM FM TD	SPEED KT
RWY 03 VAVGA	AT 230
RWY 06 20NM	AT 230
RWY 03 KARGO	185-160
RWY 06 SAGAR	185-160
5	160-150



10 NM MSA 2700

KABLI THREE ARRIVAL

- From KABLI track 281° to KYEMA
Cross KYEMA AT or ABV 9000ft
- Track 281° to VAVGA
Cross VAVGA BTN 5000ft and 7000ft
IAS RWY 03 AT 230KT from VAVGA
- Turn RIGHT track 283° to KARGO
Cross KARGO AT or ABV 3000ft
MAX IAS RWY 03 185KT from KARGO

RWY 03 VICTOR: • From KARGO track 284° VISUAL to OBGOS for VISUAL final RWY 03

RWY 06 VICTOR: • From KARGO track 284° to SAGAR
MAX IAS 185KT from SAGAR
• Turn RIGHT, track 330° VISUAL to IPDIG for VISUAL final RWY 06

COMMUNICATIONS FAILURE: PROCEDURE IN IMC

- Squawk 7600, comply with vertical navigation requirements, but not below MSA.
- Track via the latest STAR clearance to the nominated runway, then fly the most suitable approach in accordance with ERS A EMERG Section 1.5.