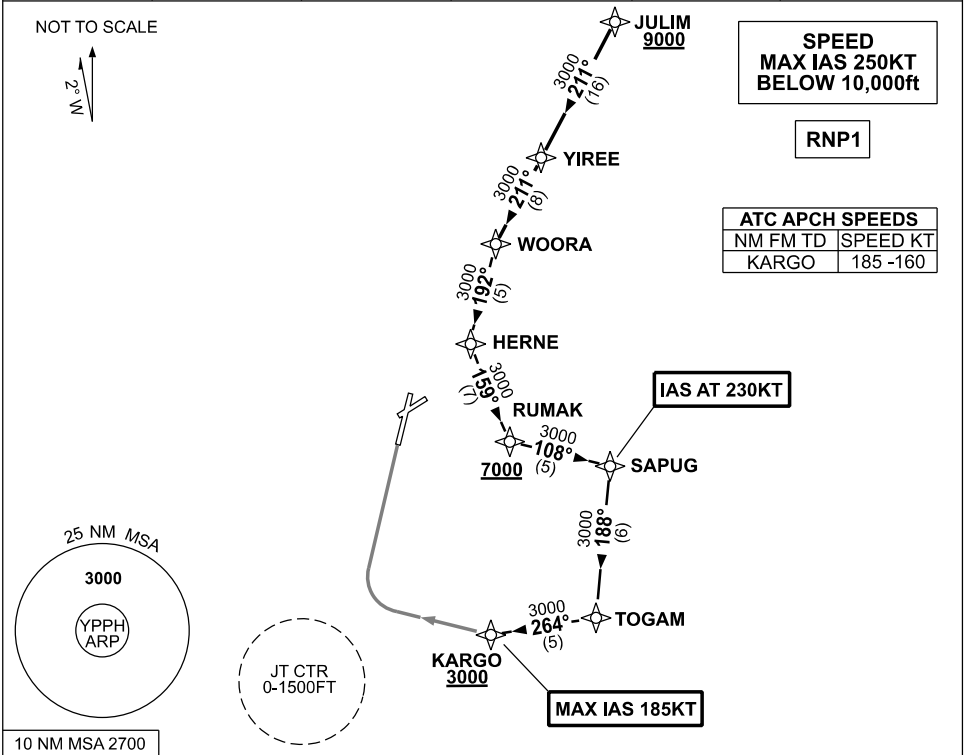


**STANDARD INSTRUMENT ARRIVAL (STAR)  
JULIM EIGHT X-RAY ARRIVAL (JET) (RNAV)  
PERTH, WA (YPPH)**

**09 JUL 2026**

ATIS 113.7 123.8	APP 123.6 132.95	TWR 127.4	SMC E of RWY 03/21 122.2 W of RWY 03/21 121.7	Bearings are Magnetic Elevations in FEET AMSL
---------------------	---------------------	--------------	-----------------------------------------------------	--------------------------------------------------



**JULIM EIGHT ARRIVAL**

- Cross** JULIM AT or ABV 9000ft
  - From JULIM track 211° to YIREE
  - Track 211° to WOORA
  - Turn LEFT track 192° to HERNE
  - Turn LEFT track 159° to RUMAK
- Cross** RUMAK AT or ABV 7000ft
  - Turn LEFT track 108° to SAPUG
- IAS AT 230KT** from SAPUG
  - Turn RIGHT track 188° to TOGAM
  - Turn RIGHT track 264° to KARGO
- Cross** KARGO AT or ABV 3000ft
  - MAX IAS 185KT** from KARGO

**RWY 03 X-RAY:** • From KARGO turn RIGHT, track via RNP X RWY 03 (AR).

**COMMUNICATIONS FAILURE: PROCEDURE IN IMC**

- Squawk 7600, comply with vertical navigation requirements, but not below MSA.
- Track via the latest STAR clearance to the nominated runway, then fly the most suitable approach in accordance with ERS A EMERG Section 1.5.