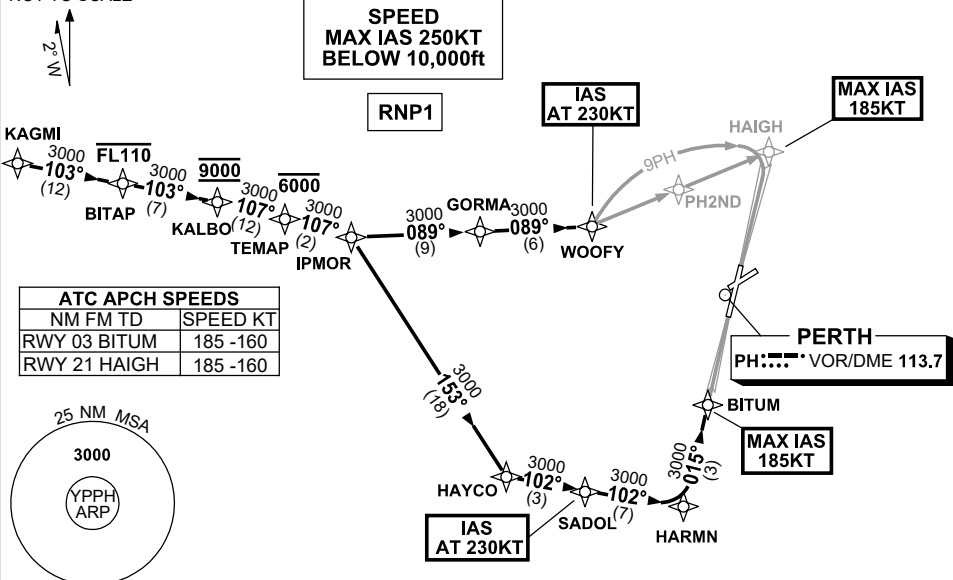


# STANDARD INSTRUMENT ARRIVAL (STAR) IPMOR TWO ALPHA ARRIVALS (RNAV) RWY 03/21 PERTH, WA (YPPH)

5 SEP 2024

ATIS 113.7 123.8	APP 123.6	TWR 127.4	SMC E of RWY 03/21 122.2 W of RWY 03/21 121.7	Bearings are Magnetic Elevations in FEET AMSL
---------------------	--------------	--------------	---	--

NOT TO SCALE



## KAGMI TRANSITION

- From KAGMI, track 103° to BITAP  
**Cross** BITAP AT or BLW FL110
- Track 103° to KALBO  
Cross KALBO AT 9000ft
- Turn RIGHT, track 107° to TEMAP  
**Cross** TEMAP AT or BLW 6000ft
- Track 107° to IPMOR
- Then follow ARRIVAL Instructions.

## ARRIVAL: IPMOR TWO ALPHA

### RWY 03:

- Turn RIGHT, track 153° to HAYCO
- Turn LEFT, track 102° to SADOL  
**IAS AT 230KT** from SADOL
- Track 102° to HARMN
- Turn LEFT, track 015° to BITUM  
for ILS, RNP Z or LOC  
RWY 03 APPROACH  
MAX IAS 185KT from BITUM

### RWY 21:

- Turn LEFT, track 089° to GORMA
- Track 089° to WOOFY  
for ILS, RNP, LOC or  
VOR RWY 21 APPROACH  
**IAS AT 230KT** from WOOFY  
MAX IAS 185KT from HAIGH

## COMMUNICATIONS FAILURE: PROCEDURE IN IMC

- Squawk 7600, comply with vertical navigation requirements, but not below MSA.
- Track via the latest STAR clearance to the nominated runway, then fly the most suitable approach in accordance with ERSA EMERG Section 1.5.

Changes: RWY 06/24 TRANSITIONS DEPICTED ON NEW CHART.

PPHSR18-180