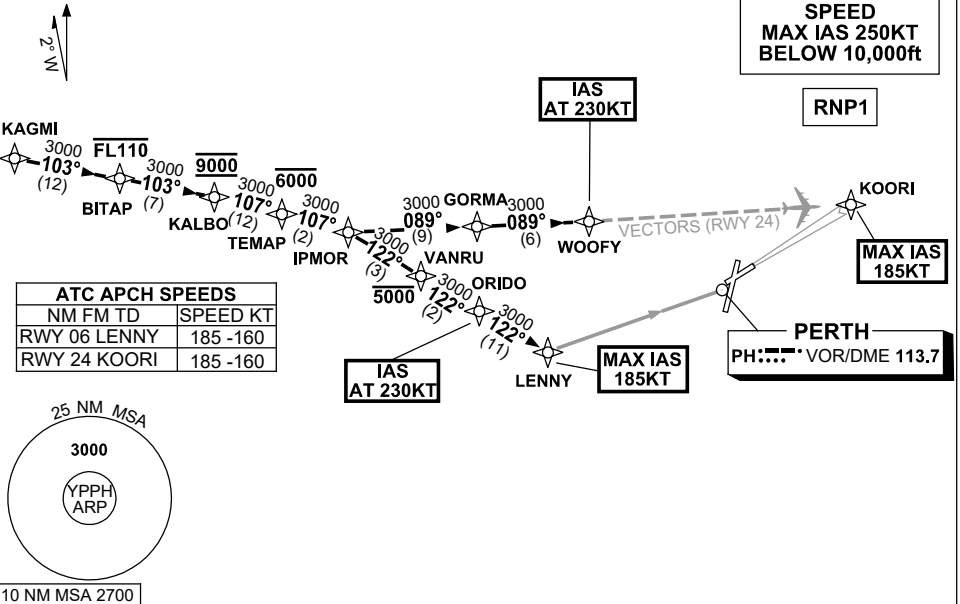


**STANDARD INSTRUMENT ARRIVAL (STAR)  
IPMOR TWO ALPHA ARRIVALS (RNAV) RWY 06/24  
PERTH, WA (YPPH)**

**5 SEP 2024**

ATIS 113.7 123.8	APP 123.6	TWR 127.4	SMC E of RWY 03/21 122.2 W of RWY 03/21 121.7	Bearings are Magnetic Elevations in FEET AMSL
---------------------	--------------	--------------	---	--

NOT TO SCALE



**KAGMI TRANSITION**

- From KAGMI, track 103° to BITAP  
**Cross** BITAP AT or BLW FL110
- Track 103° to KALBO  
**Cross** KALBO AT 9000ft
- Turn RIGHT, track 107° to TEMAP  
**Cross** TEMAP AT or BLW 6000ft
- Track 107° to IPMOR
- Then follow ARRIVAL Instructions.

**ARRIVAL: IPMOR TWO ALPHA**

**RWY 06:**

- Turn RIGHT, track 122° to VANRU  
**Cross** VANRU AT or BLW 5000ft
- Track 122° to ORIDO  
**IAS AT 230KT** from ORIDO
- Track 122° to LENNY  
for RNP or VOR RWY 06 APCH  
MAX IAS 185KT from LENNY.

**RWY 24:**

- Turn LEFT, track 089° to GORMA
- Track 089° to WOOFY,  
**IAS AT 230KT** from WOOFY
- Expect radar vectors for ILS,  
RNP or LOC RWY 24 APPROACH  
MAX IAS 185KT from KOORI

**COMMUNICATIONS FAILURE: PROCEDURE IN IMC**

- Squawk 7600, comply with vertical navigation requirements, but not below MSA.
- Track via the latest STAR clearance to the nominated runway, then fly the most suitable approach in accordance with ERSA EMERG Section 1.5.

Changes: RWY 03/21 TRANSITIONS DEPICTED ON NEW CHART.

PPHSR17-180