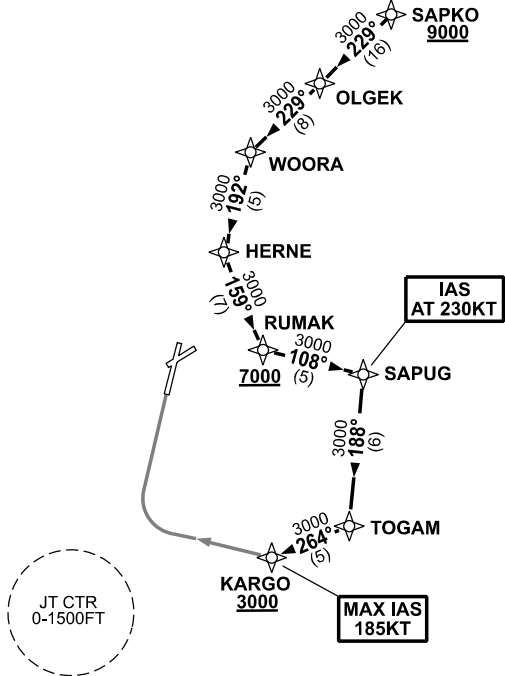


**STANDARD INSTRUMENT ARRIVAL (STAR)  
SAPKO FOUR X-RAY ARRIVALS (NON-JET) (RNAV)  
PERTH, WA (YPPH)**

**09 JUL 2026**

ATIS 113.7 123.8	APP 123.6 132.95	TWR 127.4	SMC E of RWY 03/21 122.2 W of RWY 03/21 121.7	Bearings are Magnetic Elevations in FEET AMSL
---------------------	---------------------	--------------	---	--

NOT TO SCALE



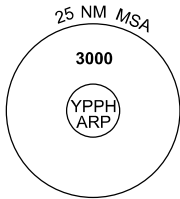
**SPEED  
MAX IAS 250KT  
BELOW 10,000ft**

**RNP1**

ATC APCH SPEEDS	
NM FM TD	SPEED KT
KARGO	185-160

**IAS  
AT 230KT**

**MAX IAS  
185KT**



10 NM MSA 2700

**SAPKO FOUR ARRIVALS**

- Cross** SAPKO AT or ABV 9000ft
- From SAPKO track 229° to OLGEK
- Track 229° to WOORA
- Turn LEFT track 192° to HERNE
- Turn LEFT track 159° to RUMAK
- Cross** RUMAK AT or ABV 7000ft
- Turn LEFT track 108° to SAPUG
- IAS** AT 230KT from SAPUG
- Turn RIGHT track 188° to TOGAM
- Turn RIGHT track 264° to KARGO
- Cross** KARGO AT or ABV 3000ft
- MAX IAS** 185KT from KARGO

**RWY 03 X-RAY:** • From KARGO, turn RIGHT, track via RNP X RWY 03 (AR).

**COMMUNICATIONS FAILURE: PROCEDURE IN IMC**

- Squawk 7600, comply with vertical navigation requirements, but not below MSA.
- Track via the latest STAR clearance to the nominated runway, then fly the most suitable approach in accordance with ERS A EMERG Section 1.5.

