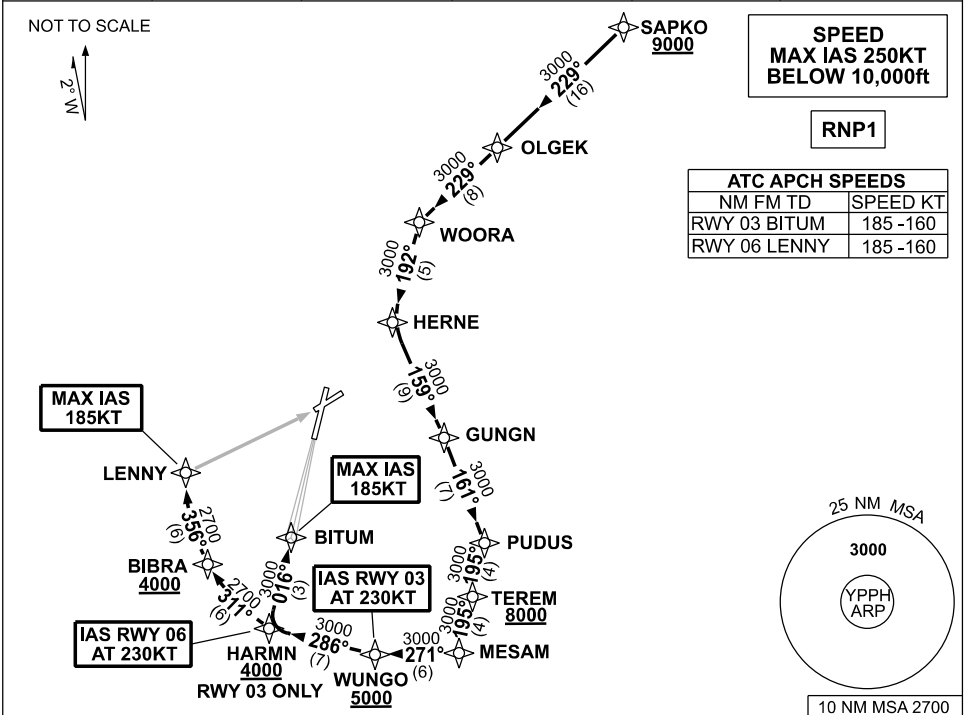


**STANDARD INSTRUMENT ARRIVAL (STAR)
SAPKO FOUR ALPHA ARRIVALS (NON-JET) (RNAV) RWY 03/06
PERTH, WA (YPPH)**

09 JUL 2026

ATIS 113.7 123.8	APP 123.6 132.95	TWR 127.4	SMC E of RWY 03/21 122.2 W of RWY 03/21 121.7	Bearings are Magnetic Elevations in FEET AMSL
---------------------	---------------------	--------------	---	--



SAPKO FOUR ALPHA ARRIVALS

RWY 03:

- Cross** SAPKO AT or ABV 9000ft
- From SAPKO track 229° to OLGEK
- Track 229° to WOORA
- Turn LEFT track 192° to HERNE
- Turn LEFT track 159° to GUNGN
- Turn RIGHT track 161° to PUDUS
- Turn RIGHT track 195° to TEREM
- Cross** TEREM AT or ABV 8000ft
- Track 195° to MESAM
- Turn RIGHT track 271° to WUNGO
- Cross** WUNGO AT or ABV 5000ft
- IAS AT 230KT** from WUNGO
- Turn RIGHT track 286° to HARMN
- Cross** HARMN AT or ABV 4000ft
- Turn RIGHT track 016° to BITUM for ILS, RNP Z or LOC RWY 03 APPROACH
- MAX IAS 185KT** from BITUM

RWY 06:

- Cross** SAPKO AT or ABV 9000ft
- From SAPKO track 229° to OLGEK
- Track 229° to WOORA
- Turn LEFT track 192° to HERNE
- Turn LEFT track 159° to GUNGN
- Turn RIGHT track 161° to PUDUS
- Turn RIGHT track 195° to TEREM
- Cross** TEREM AT or ABV 8000ft
- Track 195° to MESAM
- Turn RIGHT track 271° to WUNGO
- Cross** WUNGO AT or ABV 5000ft
- Turn RIGHT track 286° to HARMN
- IAS AT 230KT** from HARMN
- Turn RIGHT track 311° to BIBRA
- Cross** BIBRA AT or ABV 4000ft
- Turn RIGHT track 356° to LENNY for RNP or VOR RWY 06 APPROACH
- MAX IAS 185KT** from LENNY

COMMUNICATIONS FAILURE: PROCEDURE IN IMC

- Squawk 7600, comply with vertical navigation requirements, but not below MSA.
- Track via the latest STAR clearance to the nominated runway, then fly the most suitable approach in accordance with ERSA EMERG Section 1.5.