

**STANDARD INSTRUMENT ARRIVAL (STAR)
KABLI THREE ALPHA ARRIVALS (JET) (RNAV) RWY 03/06
PERTH, WA (YPPH)**

09 JUL 2026

ATIS 113.7 123.8	APP 123.6	TWR 127.4	SMC E of RWY 03/21 122.2 W of RWY 03/21 121.7	Bearings are Magnetic Elevations in FEET AMSL
---------------------	--------------	--------------	---	--

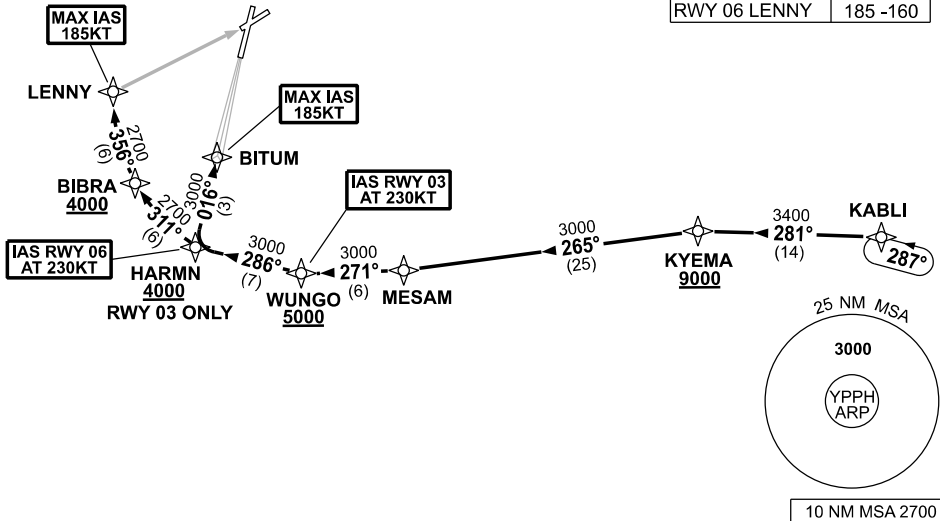
NOT TO SCALE



RNP1

**SPEED
MAX IAS 250KT
BELOW 10,000ft**

ATC APCH SPEEDS	
NM FM TD	SPEED KT
RWY 03 BITUM	185 -160
RWY 06 LENNY	185 -160



KABLI THREE ALPHA ARRIVALS

RWY 03:

- From KABLI track 281° to KYEMA **Cross** KYEMA AT or ABV 9000ft
- Turn LEFT track 265° to MESAM
- Turn RIGHT track 271° to WUNGO **Cross** WUNGO AT or ABV 5000ft **IAS AT 230KT** from WUNGO
- Turn RIGHT track 286° to HARMN **Cross** HARMN AT or ABV 4000ft
- Turn RIGHT track 016° to BITUM for ILS, RNP Z or LOC RWY 03 APPROACH **MAX IAS 185KT** from BITUM

RWY 06:

- From KABLI track 281° to KYEMA **Cross** KYEMA AT or ABV 9000ft
- Turn LEFT track 265° to MESAM
- Turn RIGHT track 271° to WUNGO **Cross** WUNGO AT or ABV 5000ft
- Turn RIGHT track 286° to HARMN **IAS AT 230KT** from HARMN
- Turn RIGHT track 311° to BIBRA **Cross** BIBRA AT or ABV 4000ft
- Turn RIGHT track 356° to LENNY for RNP or VOR RWY 06 APPROACH **MAX IAS 185KT** from LENNY

COMMUNICATIONS FAILURE: PROCEDURE IN IMC

- Squawk 7600, comply with vertical navigation requirements, but not below MSA.
- Track via the latest STAR clearance to the nominated runway, then fly the most suitable approach in accordance with ERS A EMERG Section 1.5.

Changes: FROM SUP H09/26.

PPHSR09-187