

**STANDARD INSTRUMENT ARRIVAL (STAR)  
LAVEX THREE X-RAY ARRIVAL (NON-JET) (RNAV)  
PERTH, WA (YPPH)**

**09 JUL 2026**

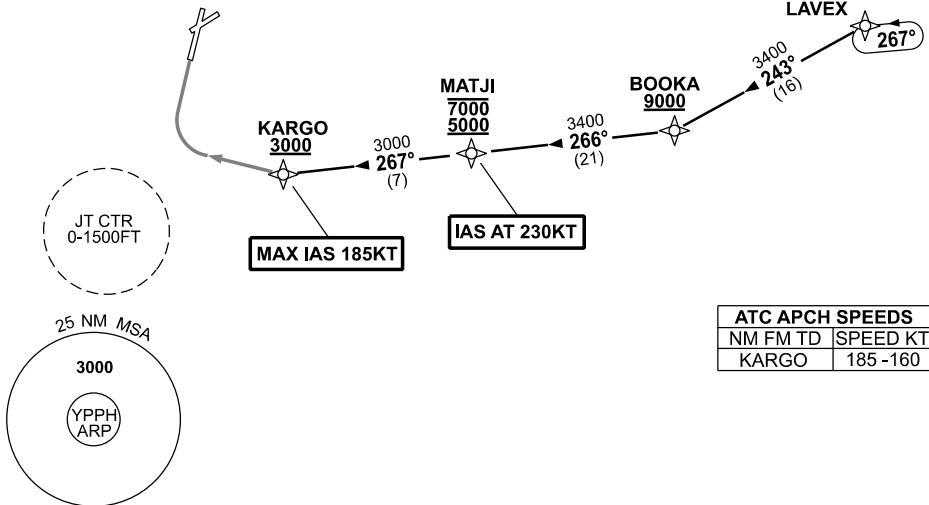
ATIS 113.7 123.8	APP 123.6	TWR 127.4	SMC E of RWY 03/21 122.2 W of RWY 03/21 121.7	Bearings are Magnetic Elevations in FEET AMSL
---------------------	--------------	--------------	---	--

NOT TO SCALE



**SPEED  
MAX IAS 250KT  
BELOW 10,000ft**

**RNP1**



ATC APCH SPEEDS	
NM FM TD	SPEED KT
KARGO	185 -160

**LAVEX THREE ARRIVAL**

- From LAVEX track 243° to BOOKA  
**Cross** BOOKA AT or ABV 9000ft
- Turn RIGHT track 266° to MATJI  
**Cross** MATJI BTN 5000ft and 7000ft  
**IAS AT 230KT** from MATJI
- Turn RIGHT track 267° to KARGO  
**Cross** KARGO AT or ABV 3000ft  
**MAX IAS 185KT** from KARGO.

**RWY 03 X-RAY**: • From KARGO turn RIGHT, track via RNP X RWY 03 (AR).

**COMMUNICATIONS FAILURE: PROCEDURE IN IMC**

- Squawk 7600, comply with vertical navigation requirements, but not below MSA.
- Track via the latest STAR clearance to the nominated runway, then fly the most suitable approach in accordance with ERS A EMERG Section 1.5.

Changes: FROM SUP H09/26.

PPHSR06-187